



AC5000 Series

Barn Door Hardware

OPTIONS



Model: AC5000-A

Description: Face Mounted Trolley

Finish: Stainless Steel



Model: AC5000-B

Description: Face Mounted Trolley

Finish: Stainless Steel



Model: AC5000-C

Description: Face Mounted Trolley

Finish: Stainless Steel



Model: AC5000-D

Description: Face Mounted Trolley

Finish: Stainless Steel



Model: AC5000-E

Description: Face Mounted Trolley

Finish: Stainless Steel



Model: AC5000-F

Description: Face Mounted Trolley

Finish: Stainless Steel

AC5000-A

Architectural Concepts

888.248.2724

720.259.5364

info@archconceptsllc.com

18499 Longs Way, Suite 102
Parker, CO 80134

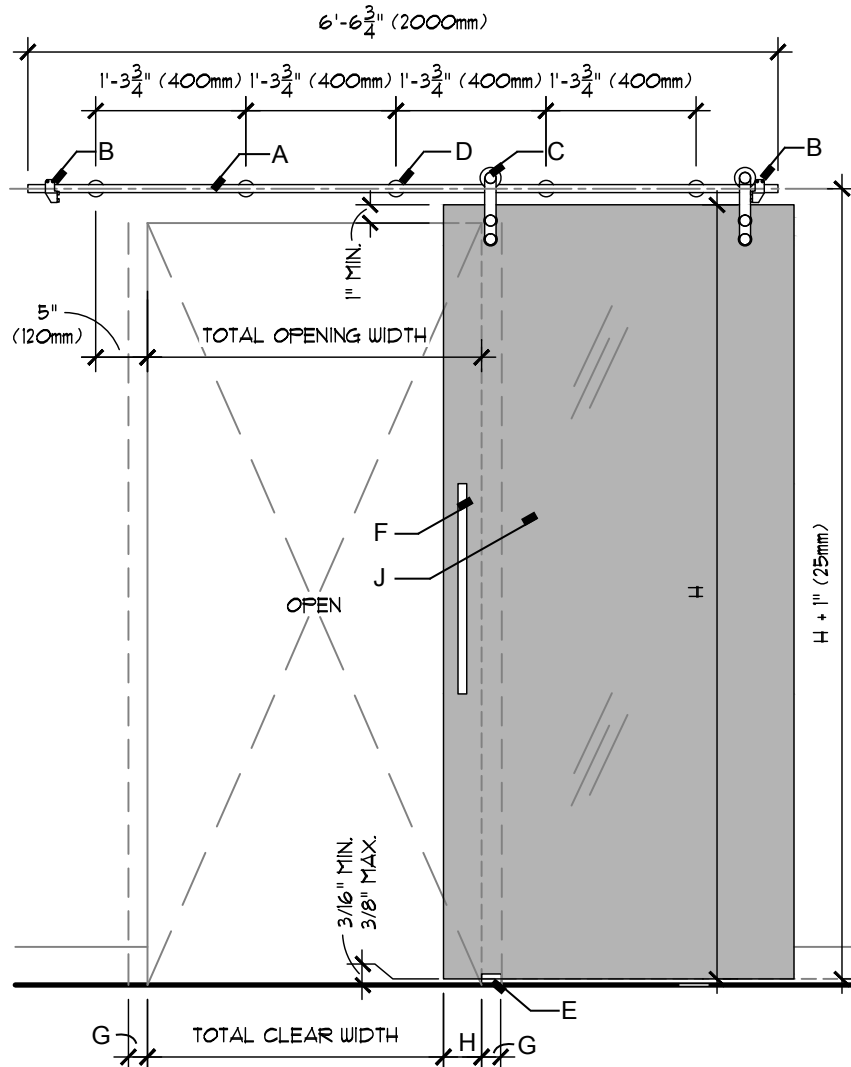
archconceptsllc.com

OPTIONAL PULLS *(not part of AC5000)*

See Catalog for options at <https://www.archconceptsllc.com/products/doors/hardware/pulls/>

AC5000-A

Barn Door



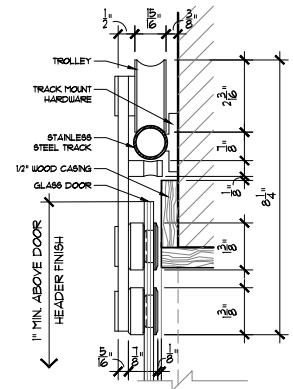
KEYNOTES:

- A. Stainless steel track
- B. Door stop
- C. Trolley hardware
- D. Track mount hardware
- E. Floor guide
- F. Pull handle
- G. 2" side of door overlap at closed position
- H. 4" side of door overlap at open position
- J. Glass door

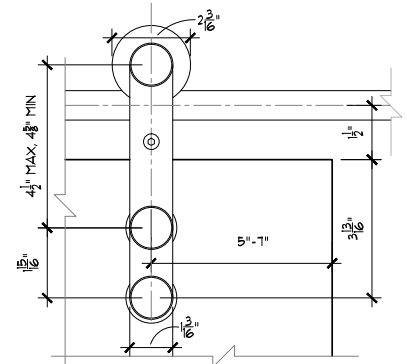
NOTES:

1. All measurements must be field verified by Architectural Concepts or by G.C.
2. Please follow care and handling instructions for doors and hardware.
3. AC will submit drawings for approval before ordering any material.
4. Layout and configuration can be customized to customer's need.

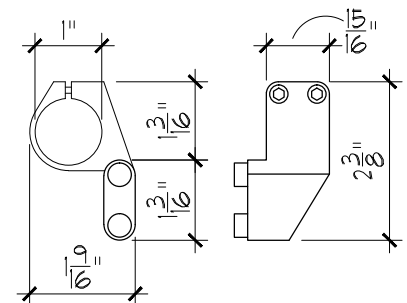
ELEVATION



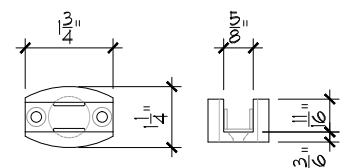
HANGER



DOOR STOP



FLOOR MOUNT



Architectural Concepts

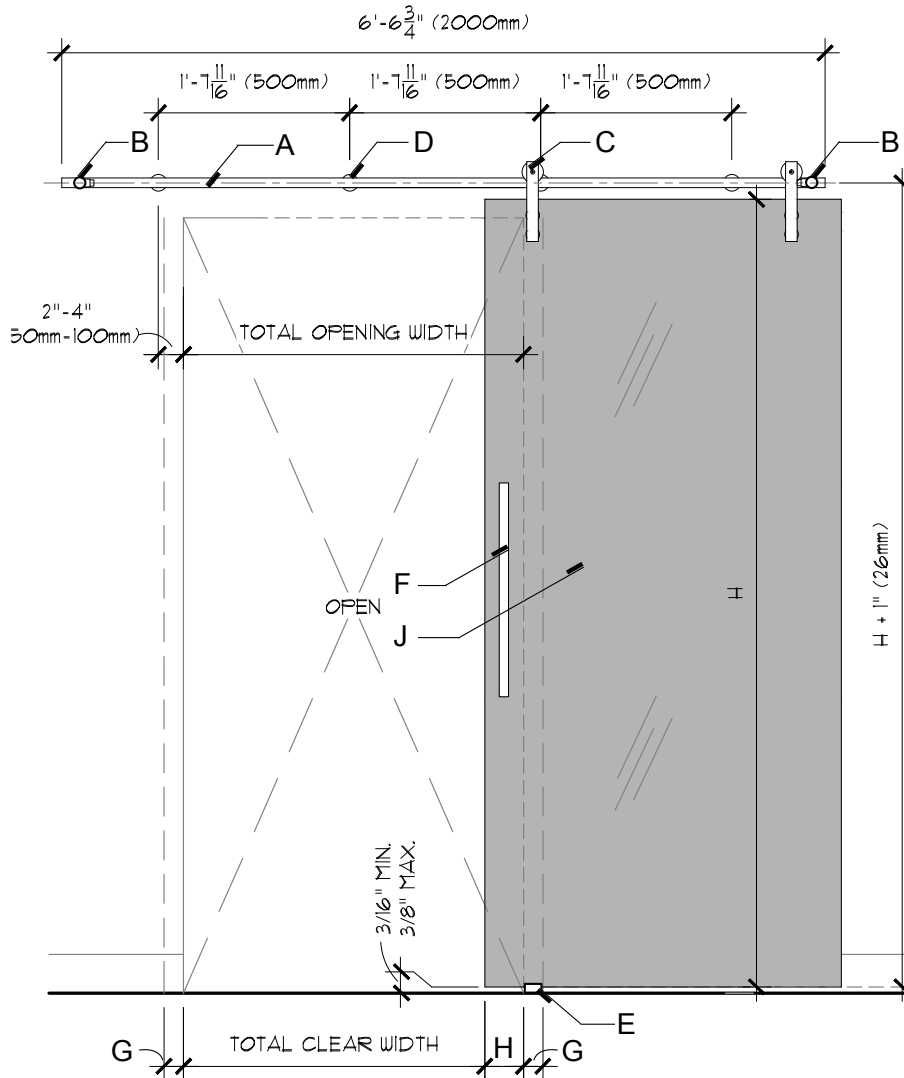
888.248.2724 | 720.259.5364 | info@archconceptsllc.com | 18499 Longs Way, Suite 102 Parker, CO 80134 | archconceptsllc.com

<https://www.archconceptsllc.com/products/doors/hardware/sliding-barn-door/>

Page 2 of 7

Revised 01-29-19

Barn Door



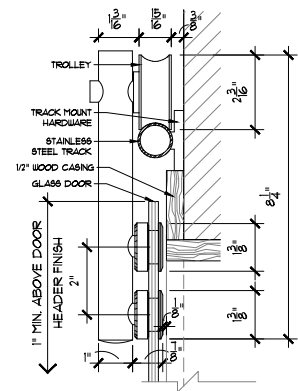
KEYNOTES:

- A. Stainless steel track
- B. Door stop
- C. Trolley hardware
- D. Track mount hardware
- E. Floor guide
- F. Pull handle
- G. 2" side of door overlap at closed position
- H. 4" side of door overlap at open position
- J. Glass door

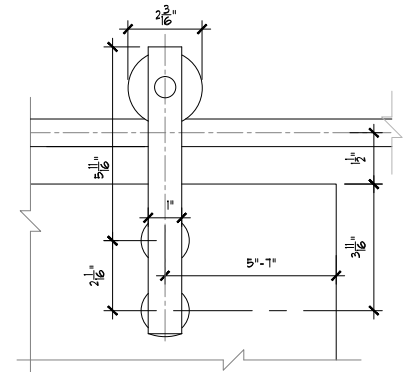
NOTES:

1. All measurements must be field verified by Architectural Concepts or by G.C.
2. Please follow care and handling instructions for doors and hardware.
3. AC will submit drawings for approval before ordering any material.
4. Layout and configuration can be customized to customer's need.

ELEVATION

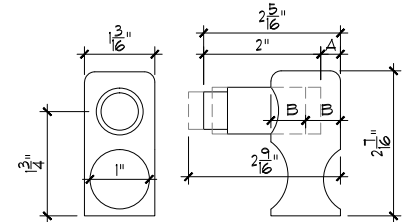


HANGER

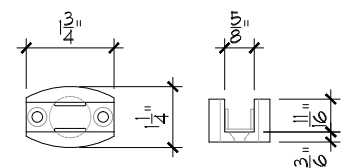


DOOR STOP

- A- 5/16" (FULL TIGHTEN POSITION)
B- 9/16" (EQUAL DISTANCE)



FLOOR MOUNT



Architectural Concepts

888.248.2724 | 720.259.5364 | info@archconceptsllc.com | 18499 Longs Way, Suite 102 Parker, CO 80134 | archconceptsllc.com

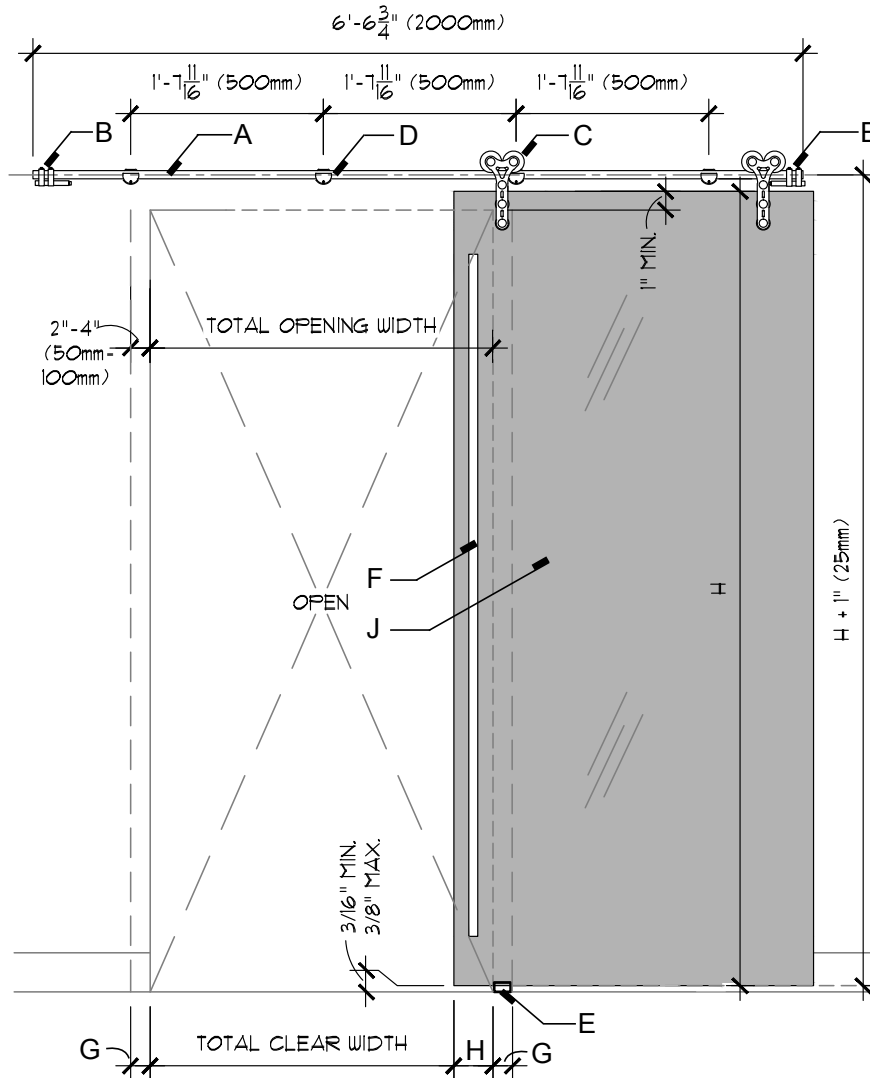
<https://www.archconceptsllc.com/products/doors/hardware/sliding-barn-door/>

Page 3 of 7

Revised 01-29-19

AC5000-C

Barn Door



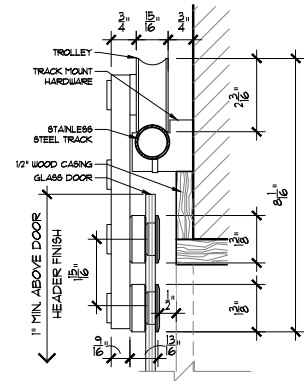
KEYNOTES:

- A. Stainless steel track
- B. Door stop
- C. Trolley hardware
- D. Track mount hardware
- E. Floor guide
- F. Pull handle
- G. 2" side of door overlap at closed position
- H. 4" side of door overlap at open position
- J. Glass door

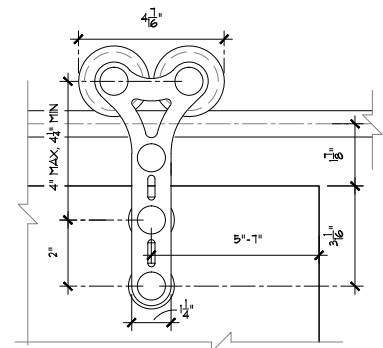
NOTES:

1. All measurements must be field verified by Architectural Concepts or by G.C.
2. Please follow care and handling instructions for doors and hardware.
3. AC will submit drawings for approval before ordering any material.
4. Layout and configuration can be customized to customer's need.

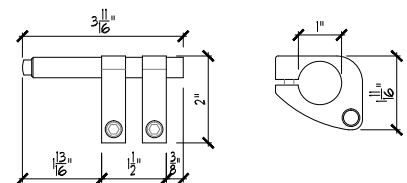
ELEVATION



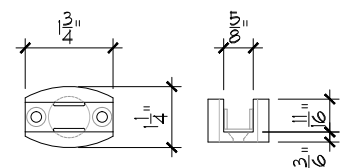
HANGER



DOOR STOP



FLOOR MOUNT



Architectural Concepts

888.248.2724 | 720.259.5364 | info@archconceptsllc.com | 18499 Longs Way, Suite 102 Parker, CO 80134 | archconceptsllc.com

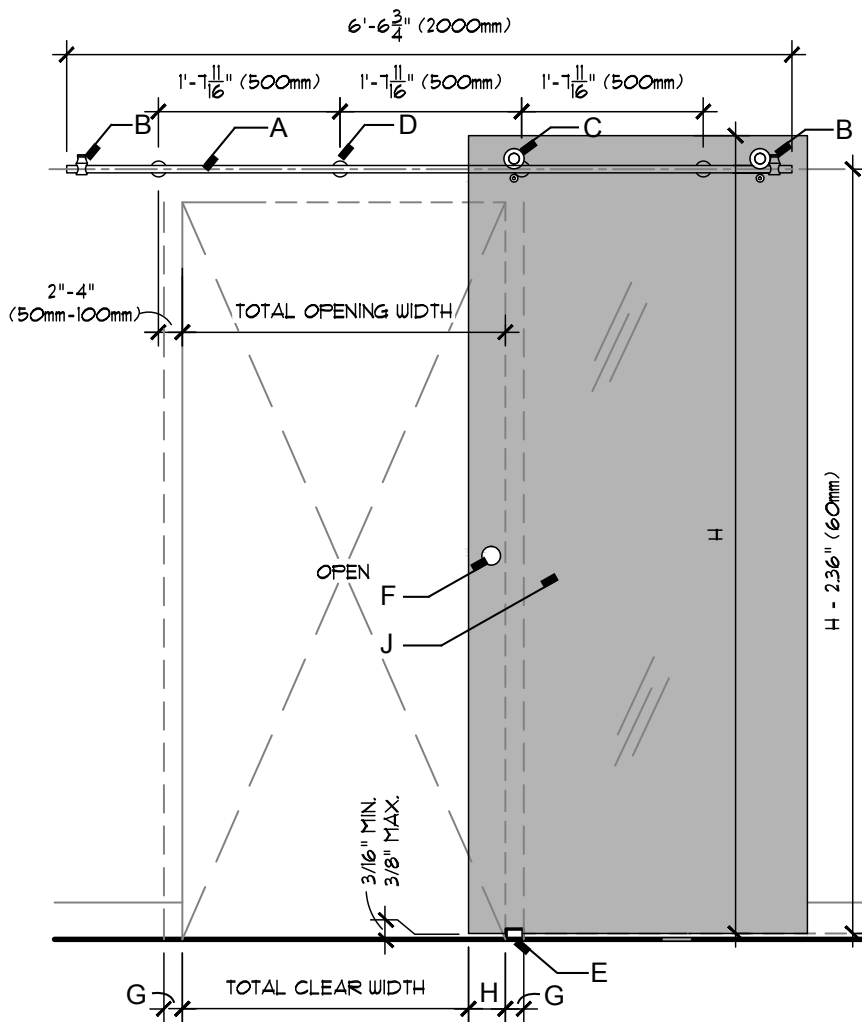
<https://www.archconceptsllc.com/products/doors/hardware/sliding-barn-door/>

Page 4 of 7

Revised 01-29-19

AC5000-D

Barn Door



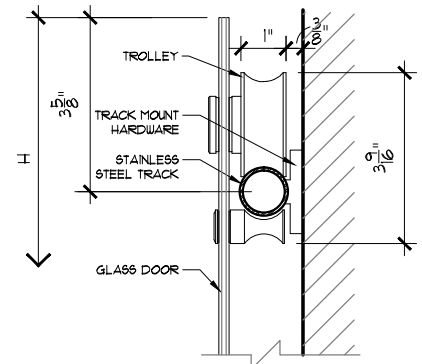
KEYNOTES:

- A. Stainless steel track
- B. Door stop
- C. Trolley hardware
- D. Track mount hardware
- E. Floor guide
- F. Pull handle
- G. 2" side of door overlap at closed position
- H. 4" side of door overlap at open position
- J. Glass door

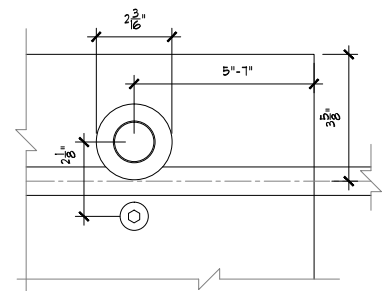
NOTES:

1. All measurements must be field verified by Architectural Concepts or by G.C.
2. Please follow care and handling instructions for doors and hardware.
3. AC will submit drawings for approval before ordering any material.
4. Layout and configuration can be customized to customer's need.

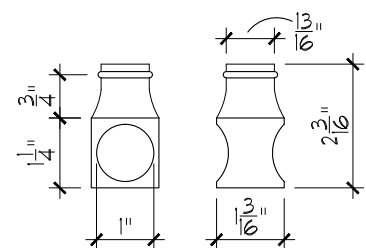
ELEVATION



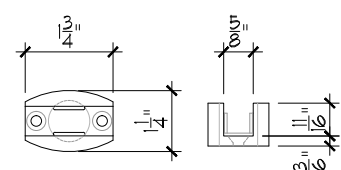
HANGER



DOOR STOP



FLOOR MOUNT



Architectural Concepts

888.248.2724 | 720.259.5364 | info@archconceptsllc.com | 18499 Longs Way, Suite 102 Parker, CO 80134 | archconceptsllc.com

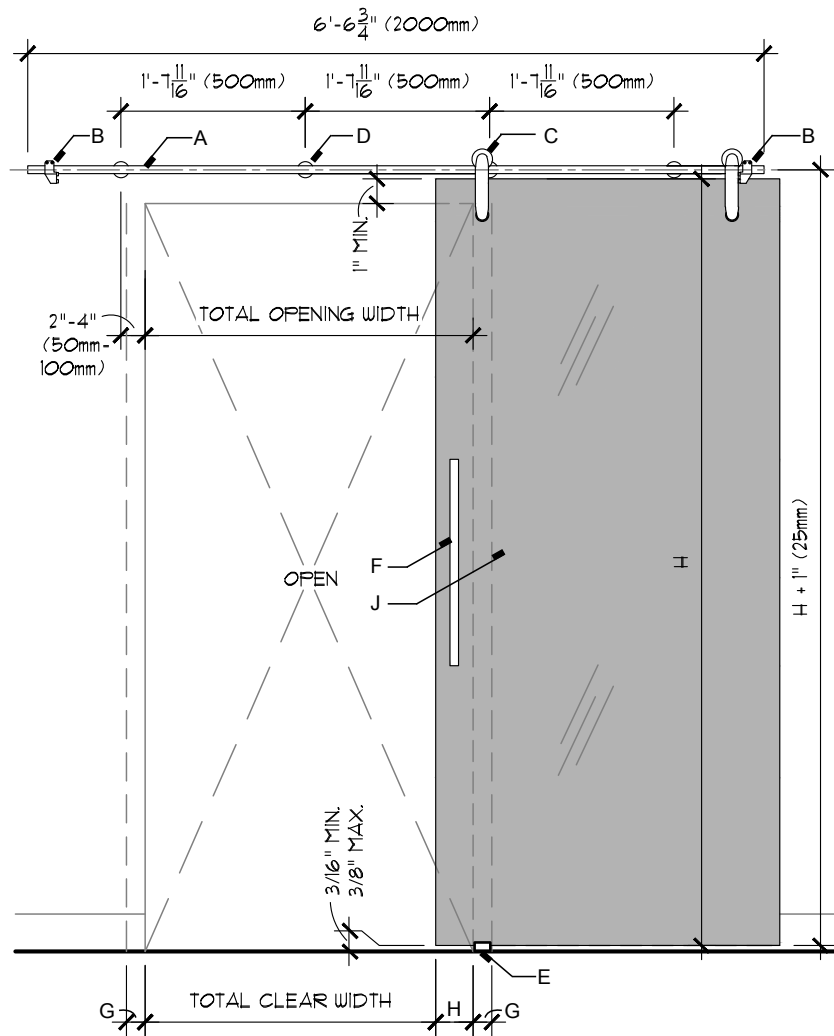
<https://www.archconceptsllc.com/products/doors/hardware/sliding-barn-door/>

Page 5 of 7

Revised 01-29-19

AC5000-E

Barn Door



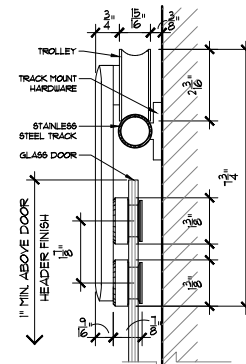
KEYNOTES:

- A. Stainless steel track
- B. Door stop
- C. Trolley hardware
- D. Track mount hardware
- E. Floor guide
- F. Pull handle
- G. 2" side of door overlap at closed position
- H. 4" side of door overlap at open position
- J. Glass door

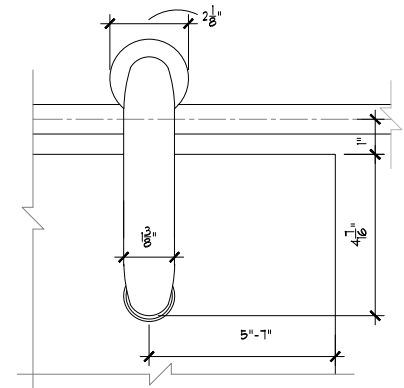
NOTES:

1. All measurements must be field verified by Architectural Concepts or by G.C.
2. Please follow care and handling instructions for doors and hardware.
3. AC will submit drawings for approval before ordering any material.
4. Layout and configuration can be customized to customer's need.

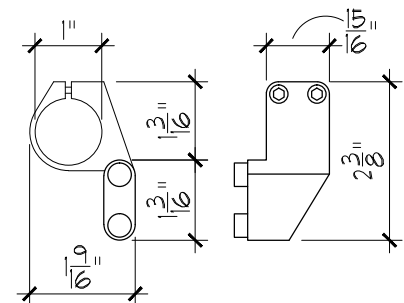
ELEVATION



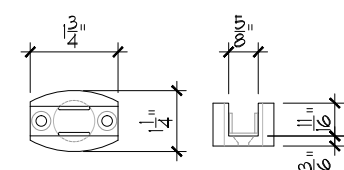
HANGER



DOOR STOP



FLOOR MOUNT



Architectural Concepts

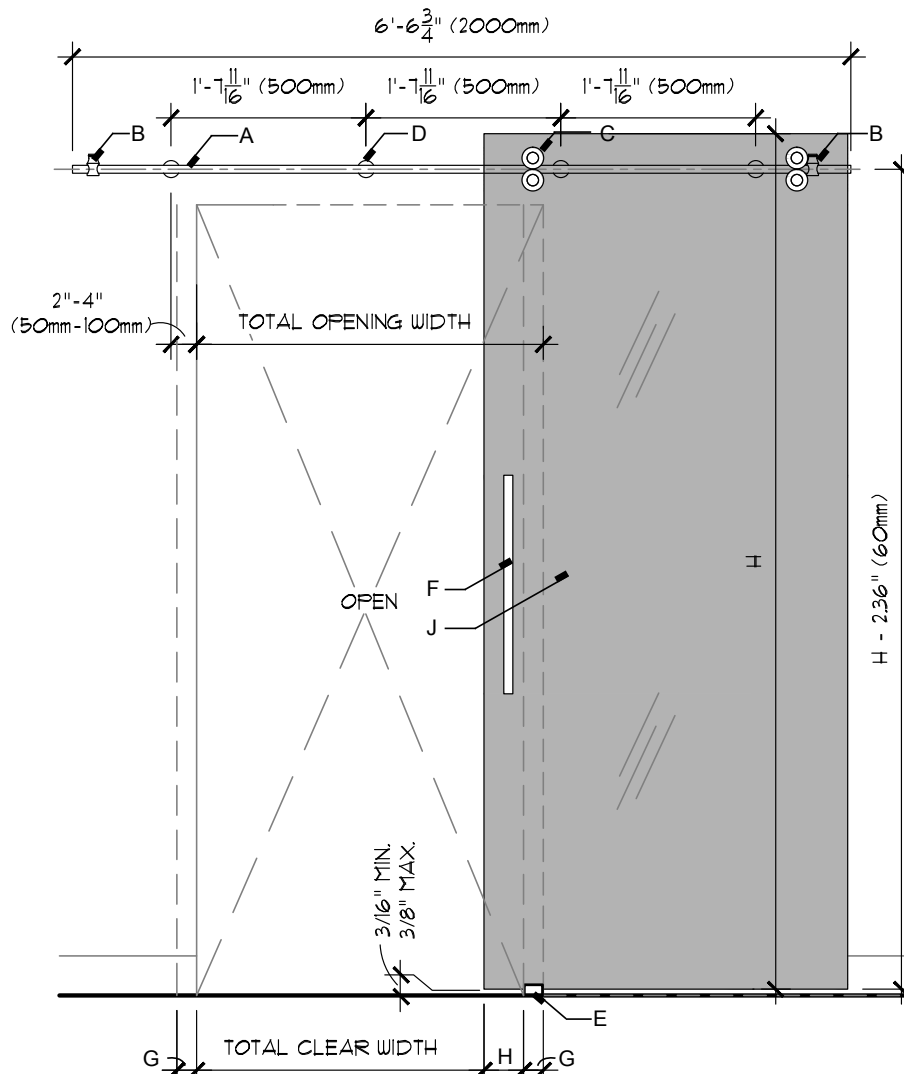
888.248.2724 | 720.259.5364 | info@archconceptsllc.com | 18499 Longs Way, Suite 102 Parker, CO 80134 | archconceptsllc.com

<https://www.archconceptsllc.com/products/doors/hardware/sliding-barn-door/>

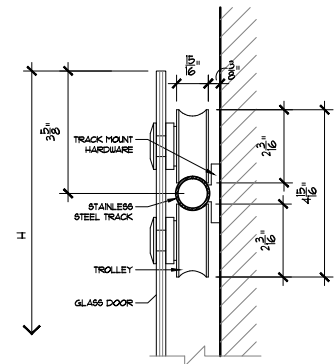
Page 6 of 7

Revised 01-29-19

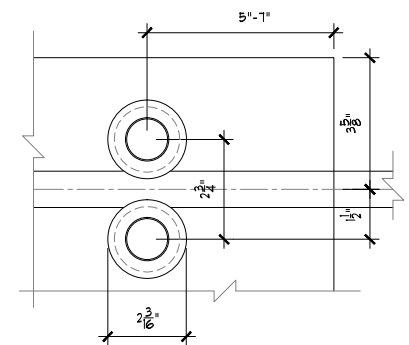
Barn Door



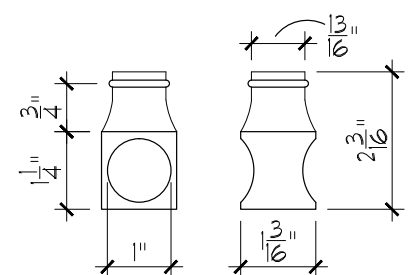
ELEVATION



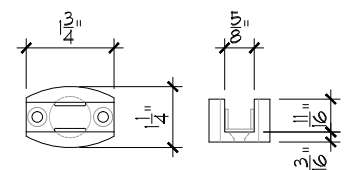
HANGER



DOOR STOP



FLOOR MOUNT



KEYNOTES:

- A. Stainless steel track
- B. Door stop
- C. Trolley hardware
- D. Track mount hardware
- E. Floor guide
- F. Pull handle
- G. 2" side of door overlap at closed position
- H. 4" side of door overlap at open position
- J. Glass door

- NOTES:**
1. All measurements must be field verified by Architectural Concepts or by G.C.
 2. Please follow care and handling instructions for doors and hardware.
 3. AC will submit drawings for approval before ordering any material.
 4. Layout and configuration can be customized to customer's need.



Architectural Concepts

888.248.2724 | 720.259.5364 | info@archconceptsllc.com | 18499 Longs Way, Suite 102 Parker, CO 80134 | archconceptsllc.com

<https://www.archconceptsllc.com/products/doors/hardware/sliding-barn-door/>

Page 7 of 7

Revised 01-29-19