

# FULLERTON

GLASS SHOWER ENCLOSURE BY-PASS DOOR

## SLIDING ROLLER LAYOUT

### ELEVATION

**Option 1** - Right Sliding

**Option 2** - Left Sliding

Available in 3/8" (10mm)

1/2" (12mm) glass is not recommended

### SERIES

FULLERTON

### TROLLEY

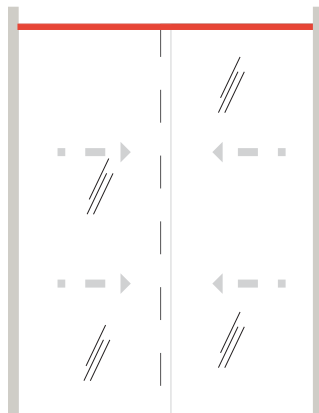


### BYPASS SLIDING LAYOUT

Available in 3/8" (10mm).

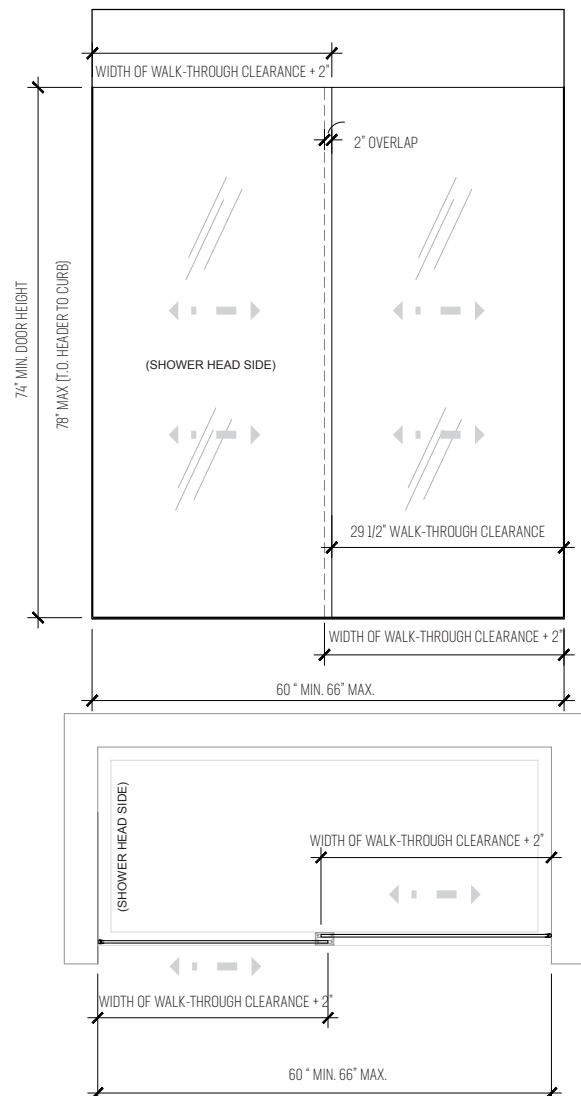
1/2" (12mm) glass is not recommended.

## SPECIFICATIONS



- Max height is 78" OA (top of header to curb)
- Panels overlap by 2" (overall width/2) + 1" to get overall panel width
- Low iron is available upon request
- Sealer available upon request  
(This makes cleaning the glass easier)

## ELEVATION



**Architectural  
Concepts**

O. 888.248.2724  
D. 720.259.5364  
E. [info@archconceptsllc.com](mailto:info@archconceptsllc.com)

18499 Longs Way  
Suite 102  
Parker, CO 80134

[archconceptsllc.com](http://archconceptsllc.com)

# FULLERTON SERIES

## HARDWARE PULLS

---

ACBMNW18



18" Towel Bar

ACM06312



12" Back-to-back Pull

ACHU6308



8" Back-to-back Pull

ACDM6312



12" Back-to-back Pull

AC0J6308



8" Back-to-back Pull

ACNE6312



12" Back-to-back Pull

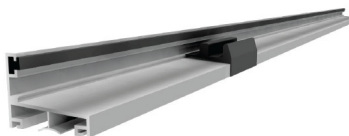
## TROLLEY HARDWARE

---

METAL TRACK



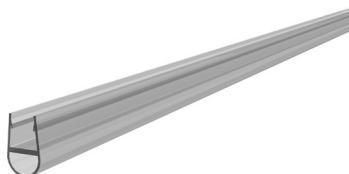
SILL W/ FLOOR GUIDE  
(USE A SILL WHEN THERE IS NO SLOPED CURB)



FLOOR GUIDE



GLASS DOOR EDGE PROTECTOR



**NOTE:** Depending on application, all shower enclosures will come with adjustable trolley



**Architectural Concepts**

888.248.2724 | 720.259.5364 | [info@archconceptsllc.com](mailto:info@archconceptsllc.com) | 18499 Longs Way, Suite 102, Parker, CO 80134 | [archconceptsllc.com](http://archconceptsllc.com)

<https://www.archconceptsllc.com/products/shower-enclosures/sliding-barn-door/>

Revised 1-03-19