

AC8000 Series

Barn Door Hardware

OPTIONS



Model: AC8000-A

Description: Top Mounted Trolley

Finish: Powder Coated Bronze Steel



Model: AC8000-B

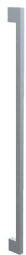
Description: Face Mounted Trolley

Finish: Powder Coated Bronze Steel

Description:

Powder Coated Bronze Steel sliding barn door system with track and hardware. Handing to be verified by GC or Architectural Concepts. Door to be at least 2" wider than finished opening to properly overlap each side for privacy. Max weight of door is 220 lbs.

OPTIONAL PULLS *(not part of AC8000)*

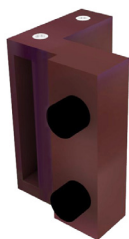


Model: AC5324

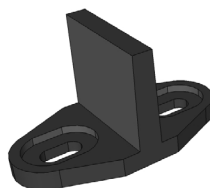
Description: 24" BTB or Single Sided

Finish: Brushed or Polished Chrome

DOOR STOP *(included)*



CONCEALED FLOOR GUIDE



Model: AC

Description: Floor Mounted

Finish: Plastic

AC8000-A

**Architectural
Concepts**

888.248.2724

720.259.5364

info@archconceptsllc.com

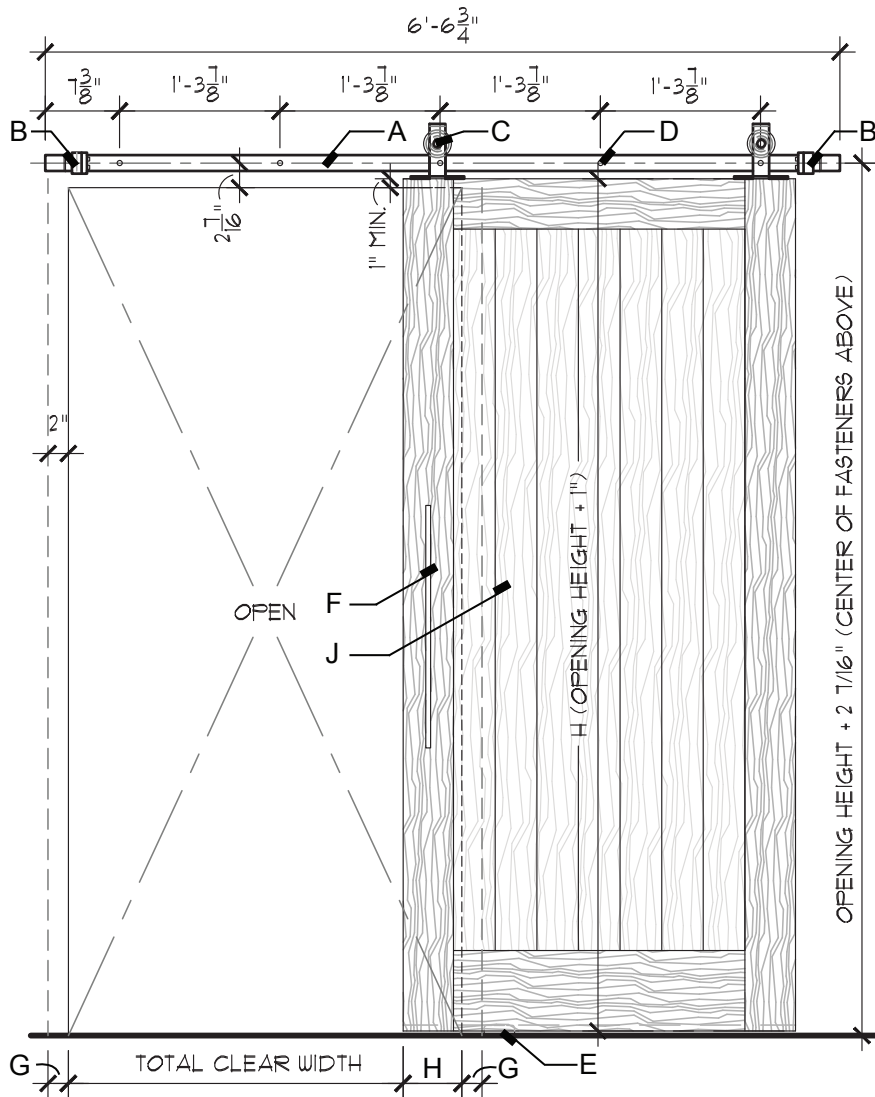
18499 Longs Way, Suite 102
Parker, CO 80134

archconceptsllc.com

See Catalog for options at: archconceptsllc.com/products/doors/hardware/pulls/

AC8000-A

Barn Door



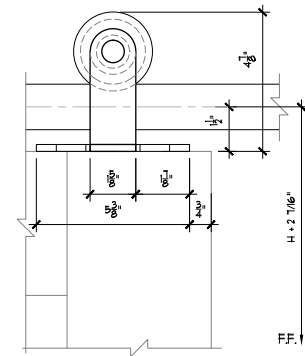
KEYNOTES:

- A. Metal track
- B. Door stop
- C. Trolley hardware
- D. Track mount hardware
- E. Floor guide
- F. Pull handle
- G. 2" side of door overlap at closed position
- H. 4" side of door overlap at open position
- J. Wood door

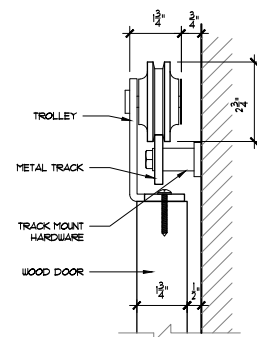
NOTES:

1. All measurements must be field verified by Architectural Concepts or by G.C.
2. Please follow care and handling instructions for doors and hardware.
3. AC will submit drawings for approval before ordering any material.
4. Layout and configuration can be customized to customer's need.

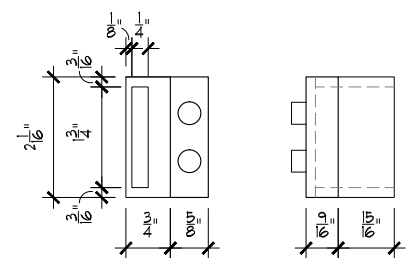
ELEVATION



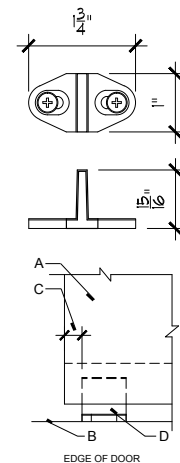
HANGER



DOOR STOP

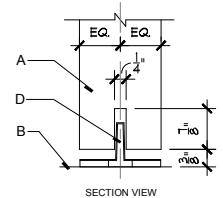


FLOOR MOUNT



KEYNOTES:

- A. Wood door
- B. Finish floor
- C. Recommended 1/2" to 1" of the door guide protrudes from the door edge
- D. Floor guide



Architectural Concepts

888.248.2724 | 720.259.5364 | info@archconceptsllc.com | 18499 Longs Way, Suite 102 Parker, CO 80134 | archconceptsllc.com

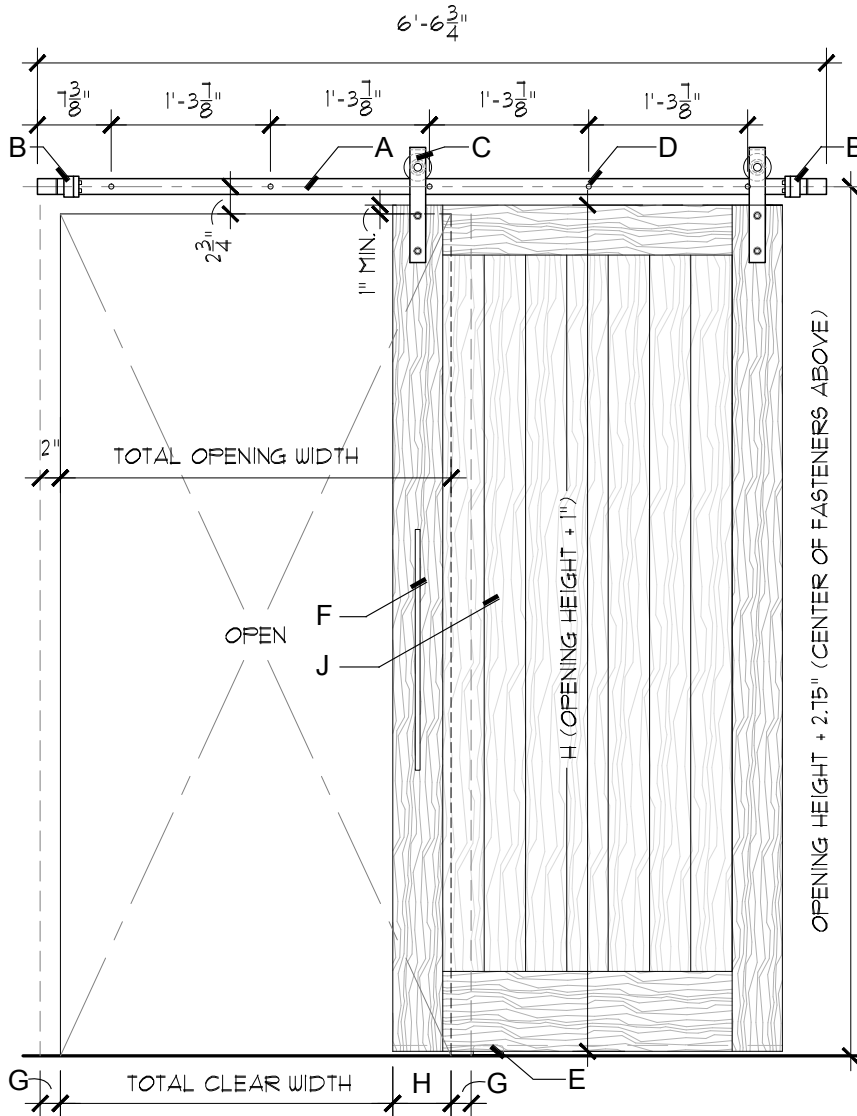
<https://www.archconceptsllc.com/products/doors/hardware/sliding-barn-door/>

Page 2 of 3

Revised 01-29-19

AC8000-B

Barn Door



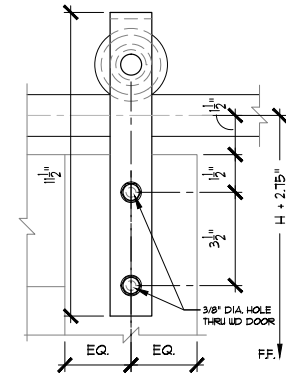
KEYNOTES:

- A. Metal track
- B. Door stop
- C. Trolley hardware
- D. Track mount hardware
- E. Floor guide
- F. Pull handle
- G. 2" side of door overlap at closed position
- H. 4" side of door overlap at open position
- J. Wood door

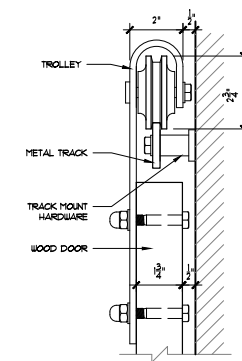
NOTES:

1. All measurements must be field verified by Architectural Concepts or by G.C.
2. Please follow care and handling instructions for doors and hardware.
3. AC will submit drawings for approval before ordering any material.
4. Layout and configuration can be customized to customer's need.

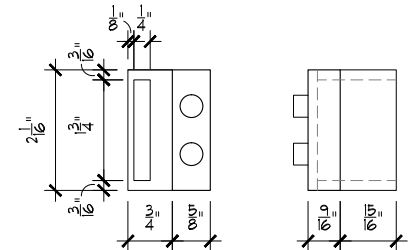
ELEVATION



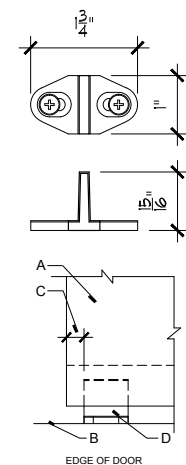
HANGER



DOOR STOP

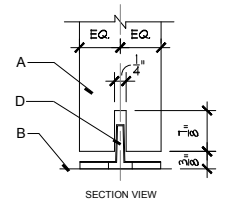


FLOOR MOUNT



KEYNOTES:

- A. Wood door
- B. Finish floor
- C. Recommended 1/2" to 1" of the door guide protrudes from the door edge
- D. Floor guide



Architectural Concepts

888.248.2724 | 720.259.5364 | info@archconceptsllc.com | 18499 Longs Way, Suite 102 Parker, CO 80134 | archconceptsllc.com

<https://www.archconceptsllc.com/products/doors/hardware/sliding-barn-door/>

Page 3 of 3

Revised 01-29-19