



ACGL150 SERIES

Barn Door Hardware

SPECIFICATIONS

FINISHES

622 - Black

629 - Polished Stainless

630 - Satin Stainless

Custom colors available upon request

MODEL

ACGL150 Glass Sliding Barn Door

DESCRIPTION

Sliding barn door system with "Dual Soft Closer," anodized aluminum track with continuous aluminum support & valance as well as floor guides and hardware. Handling to be verified by GC or Architectural Concepts. Door to be at least 2" wider than finished opening to properly overlap each side for privacy. Door is 3/8" tempered satin etched glass - TBD by Designer. Valance is anodized aluminum. Max weight of door is 220 lbs.

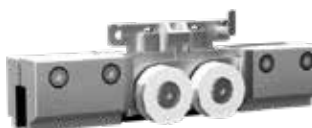


Components

SOFT CLOSE



TROLLEY



SAFETY STOP



**Architectural
Concepts**

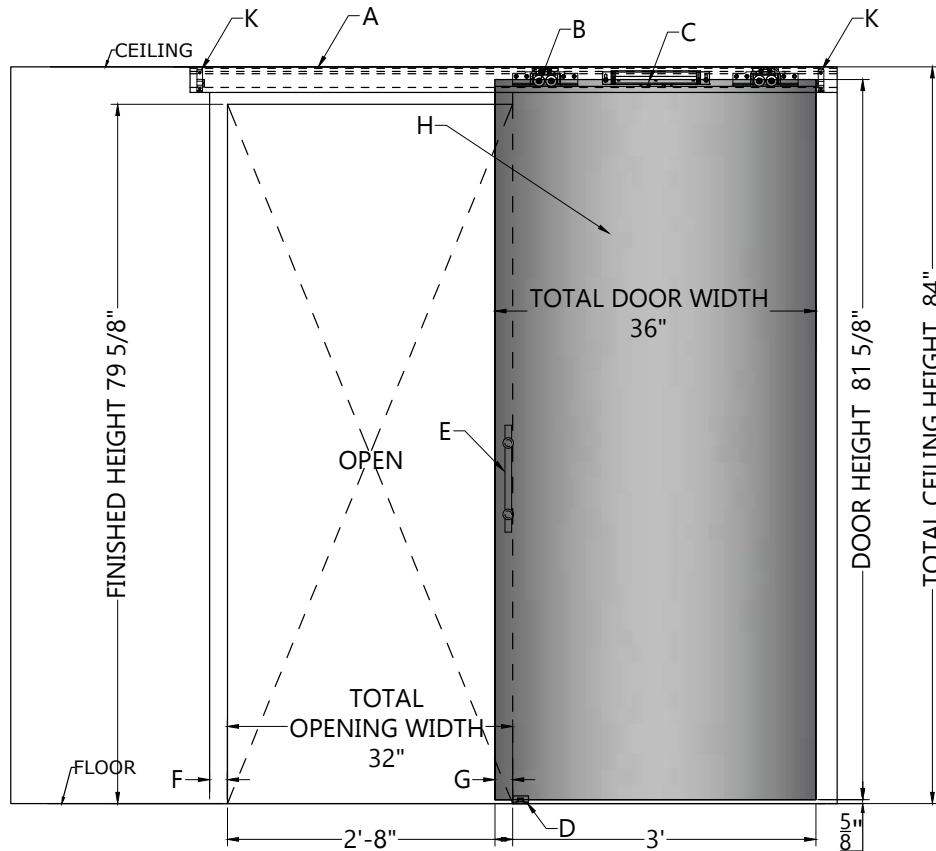
O. 888.248.2724
E. info@archconceptsllc.com

18499 Longs Way
Suite 102
Parker, CO 80134

archconceptsllc.com

ACGL150 BARN DOOR

Elevation



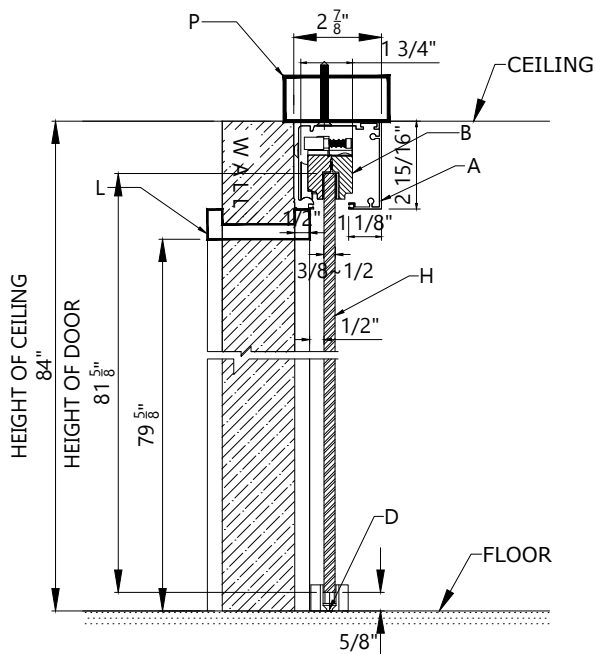
KEYNOTES:

- A. Track
- B. Trolley
- C. Soft close mechanism
- D. Floor guide
- E. Pull handle ACM06312
- F. 2" Side of door overlap at close position
- G. 2" Side of door overlap at close position
- H. Glass Door
- I. Door Trim
- J. Blocking
- K. Door stop
- L. End cap
- M. Clips

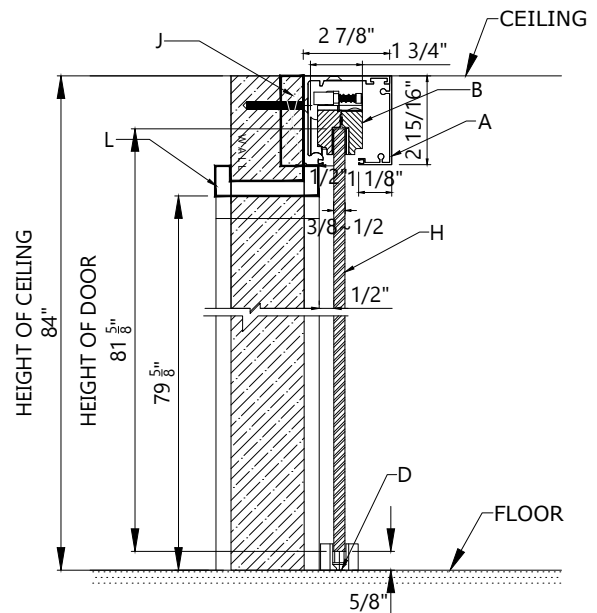
NOTES:

1. All measurements must be field verified by Architectural Concepts or by G.C.
2. Please follow care and handling instructions for doors and hardware
3. AC will submit drawings for approval before ordering any material
4. Layout and configurations can be customized to customer's needs

CEILING MOUNT



WALL MOUNT



Architectural Concepts

888.248.2724 | 720.259.5358 | info@archconceptsllc.com | 18499 Longs Way, Suite 102 Parker, CO 80134 | archconceptsllc.com

<https://www.archconceptsllc.com/products/doors/barn-doors/>

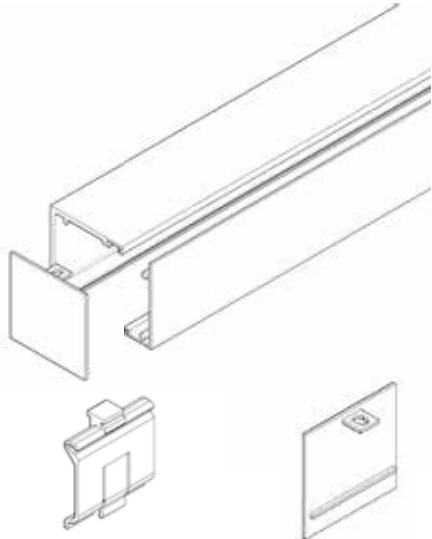
Page 2 of 3

Revised 06-10-19

ACGL150 BARN DOOR

Hardware Components

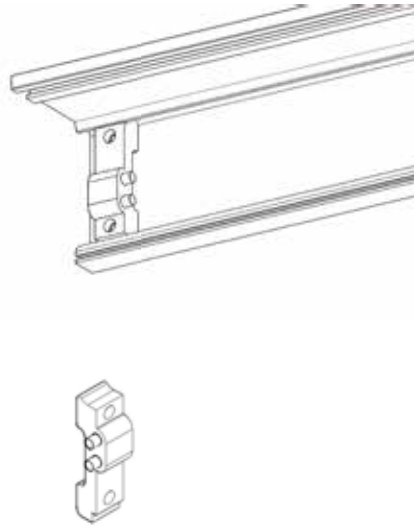
TRACK



TRACK: Clip

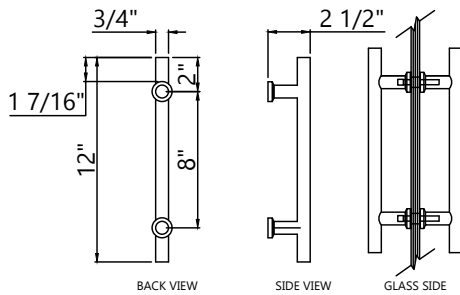
TRACK: End Cap

DOOR STOP



TRACK: Door Stop

PULL

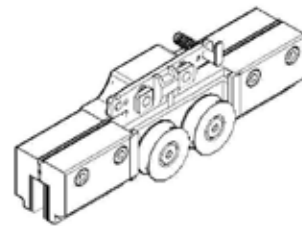


MODEL: ACM06312

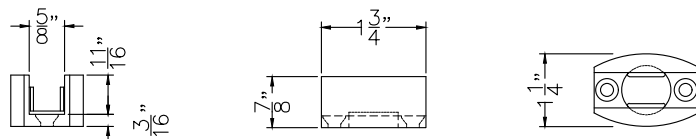
DESCRIPTION: 12" BTB

FINISH: Brushed or Polished Chrome

TROLLEY



FLOOR GUIDE

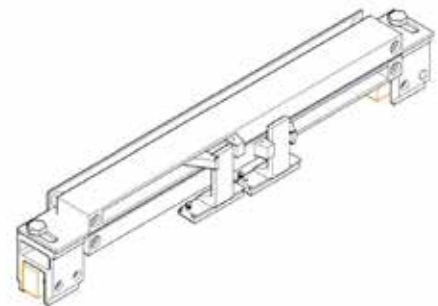


MODEL: ACFG105

DESCRIPTION: Floor Mounted

FINISH: Stainless Steel

SOFT CLOSE



Architectural Concepts

888.248.2724 | 720.259.5358 | info@archconceptsllc.com | 18499 Longs Way, Suite 102 Parker, CO 80134 | archconceptsllc.com

<https://www.archconceptsllc.com/products/doors/barn-doors/>

Page 2 of 3

Revised 06-10-19