

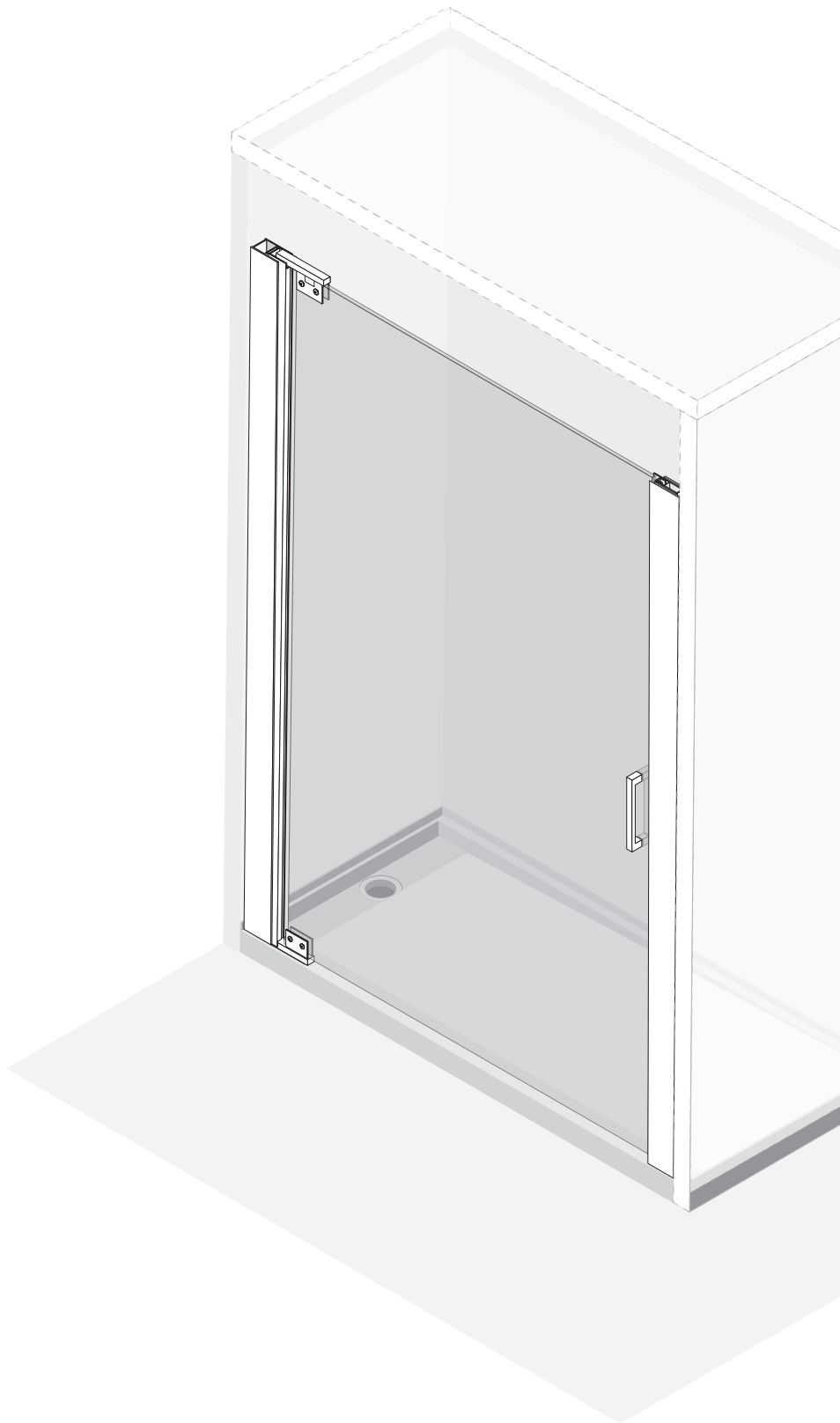
Architectural
Concepts

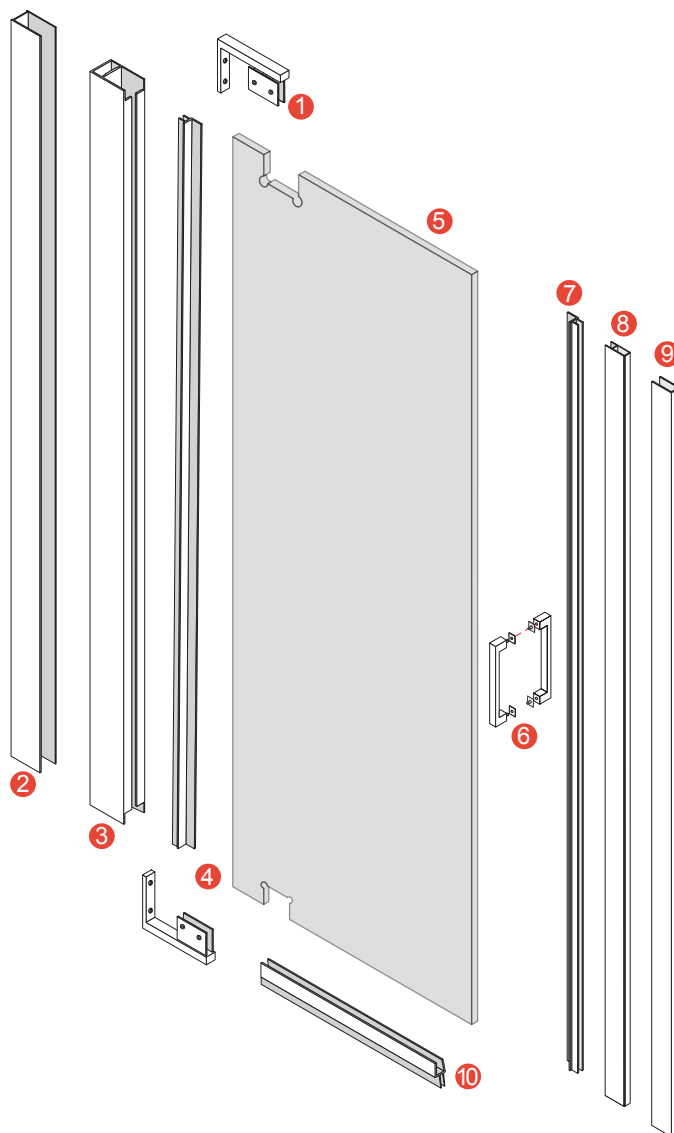
FREMONT

Hinged Pivot Shower Enclosure
Installation Instructions

76" OA Height
Stocked size up to 32"
Larger custom widths available
Optional inline panel

Customization Options Available

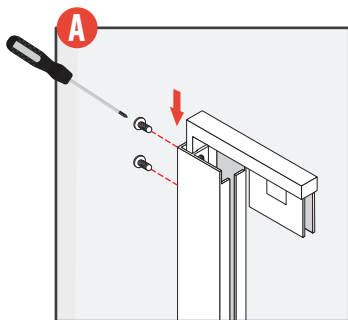




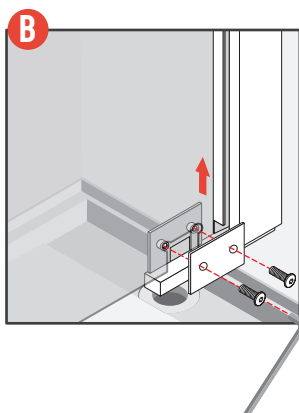
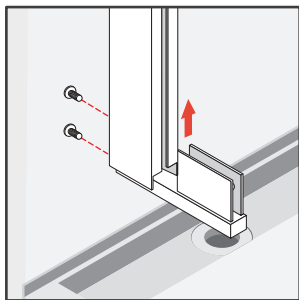
A collection of various tools commonly used in construction or home improvement. The tools include a screwdriver with a black handle and a silver shaft, two drill bits labeled with diameters Ø10 and Ø6, a pencil, a folding tape measure, a claw hammer, a caulk gun, a cordless power drill, a spirit level, and a set of four hex keys (Allen keys) of different sizes.

Step 1**A.1**

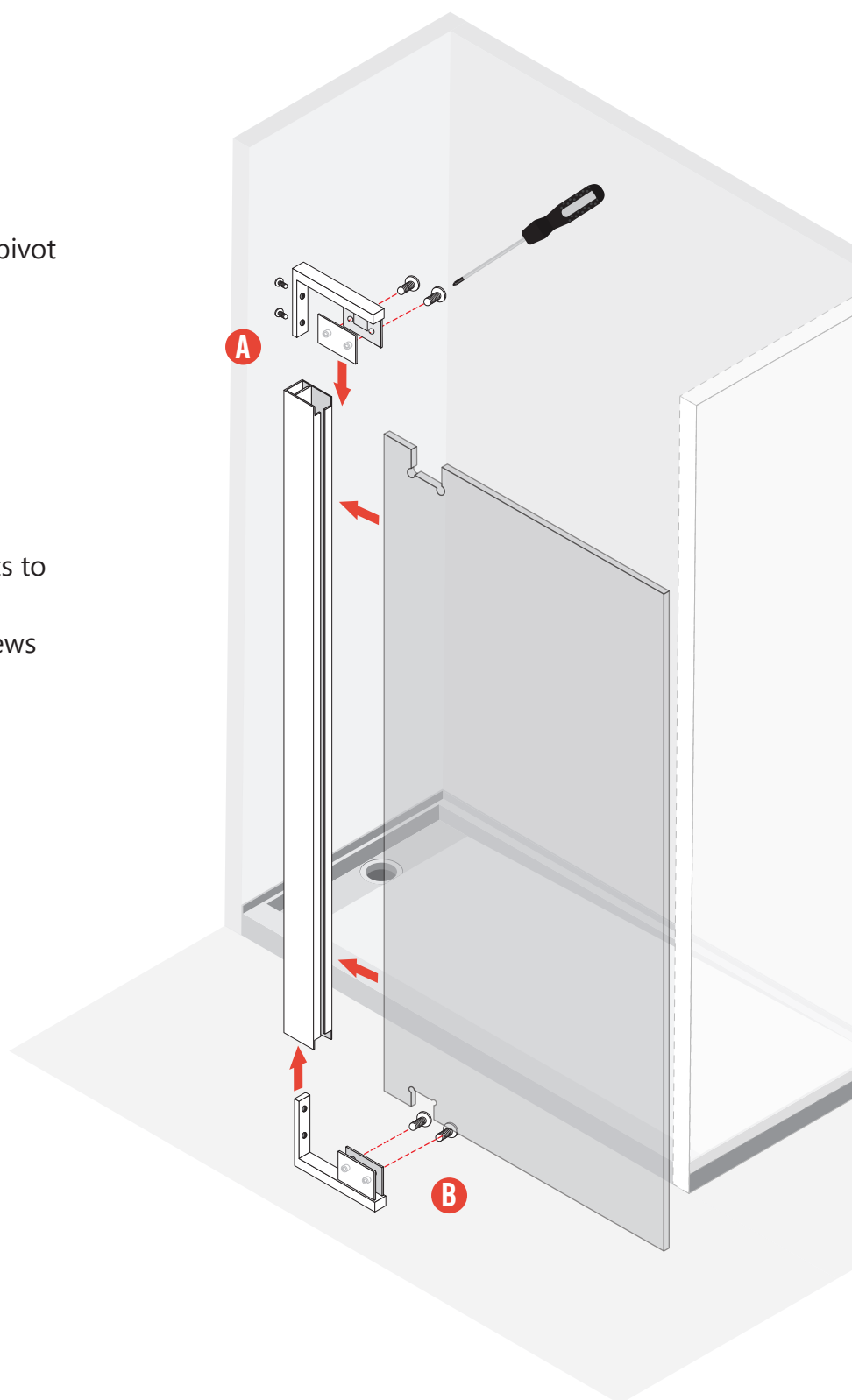
Mount top pivot bracket

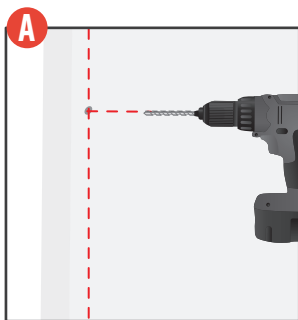
**A.2**

Mount bottom pivot bracket

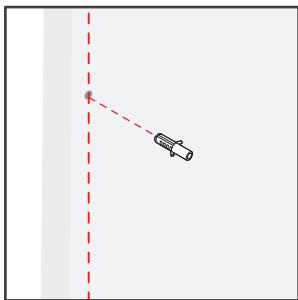
**B.1**

Remove brackets to insert glass and reinsert hex screws to hold securely

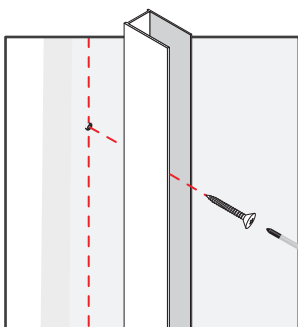


Step 2

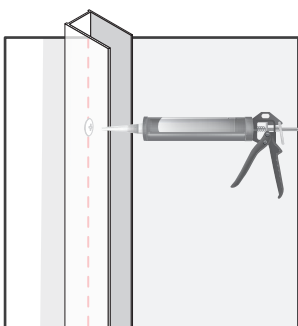
A.1
Mark and drill 4
holes to hold side
rail



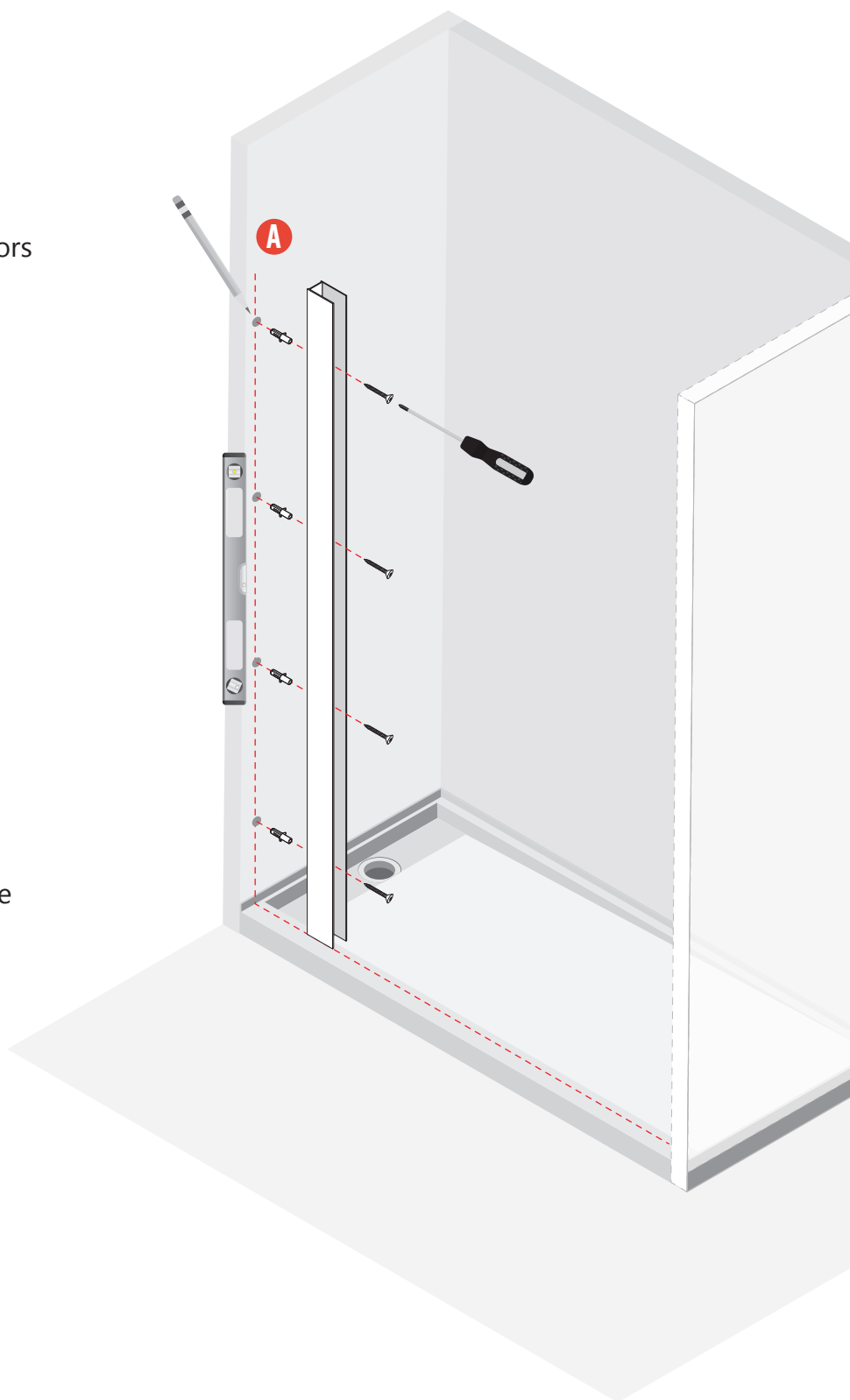
A.2
Insert wall anchors

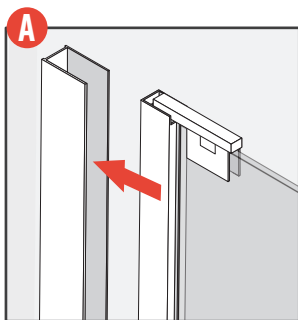


A.3
Mount side rail

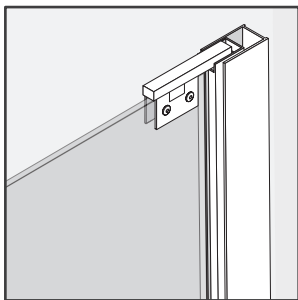


A.4
Seal with silicone

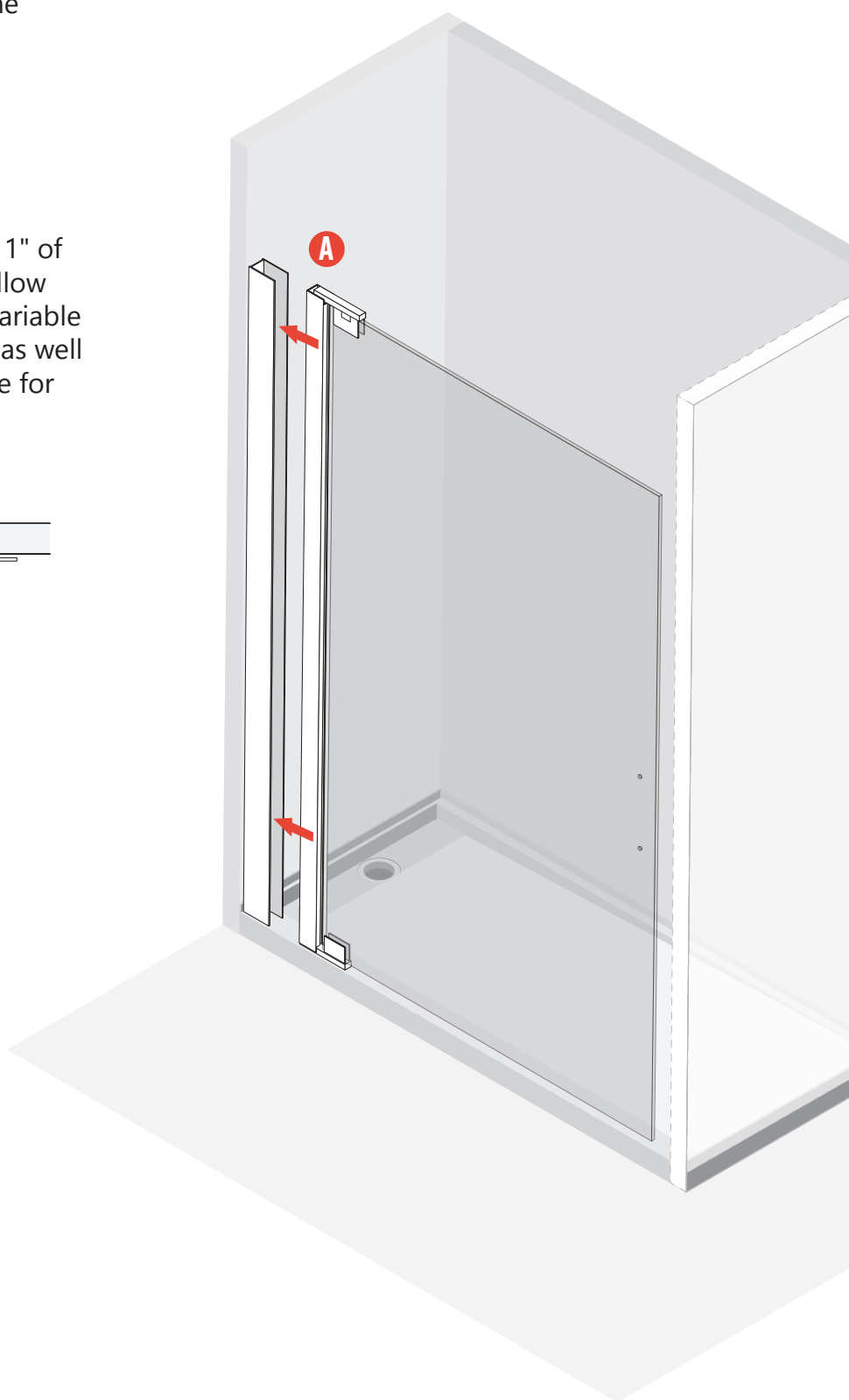
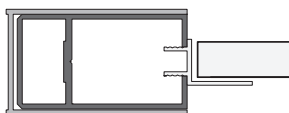


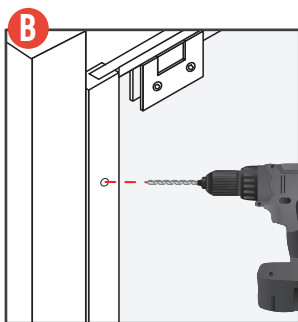
Step 3**A.1**

Slide in the side channel and adjust as needed for the shower door

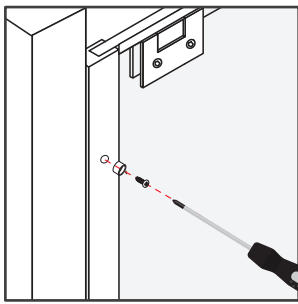
**A.2**

Channel affords 1" of adjustment to allow flexibility to fit variable opening widths as well as accommodate for out-of-square conditions

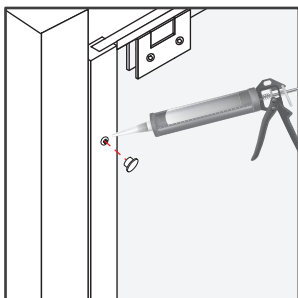


Step 3**B.1**

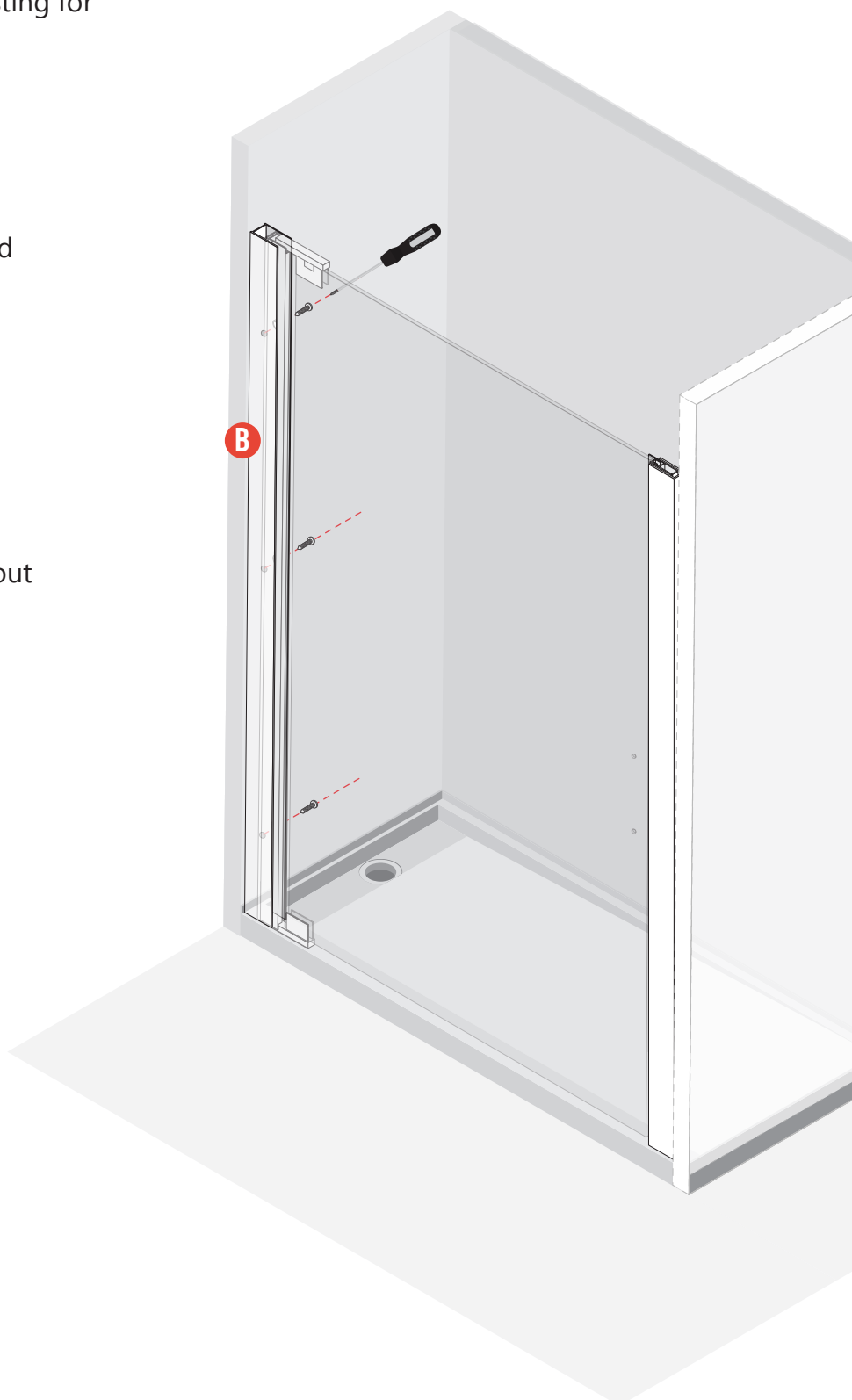
Mount the screws into the rail on the interior jamb after adjusting for level fit

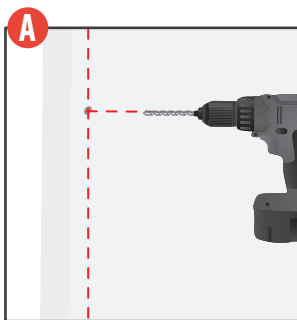
**B.2**

Insert spacer and screw to hold

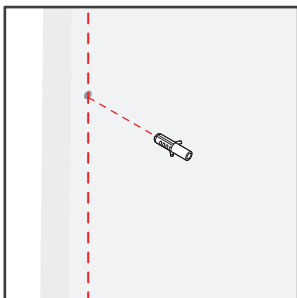
**B.3**

Apply small amount of silicone to prevent water leakage before applying cap

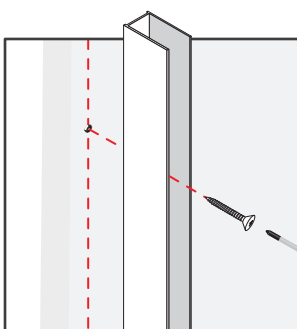


Step 4**A.1**

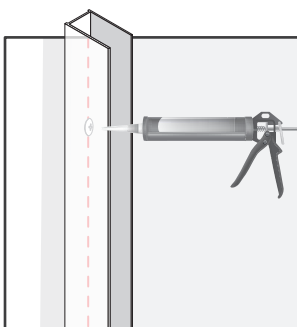
Mark and drill 4
holes to hold side
rail

**A.2**

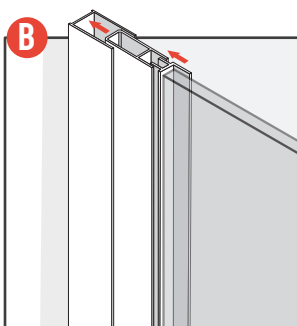
Insert wall anchors

**A.3**

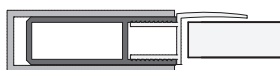
Mount side rail

**A.4**

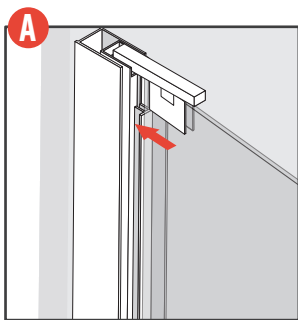
Seal with silicone

**B.1**

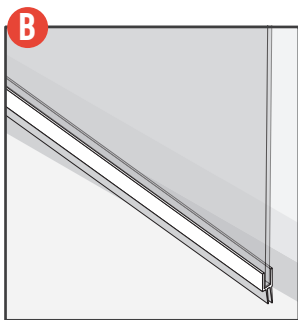
The shower has a wide
fit range and the
metal slides in and out
of the side u channel
allows you that range
of adjustment



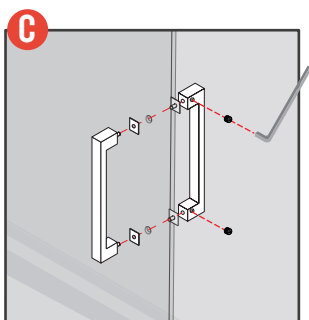
Step 5



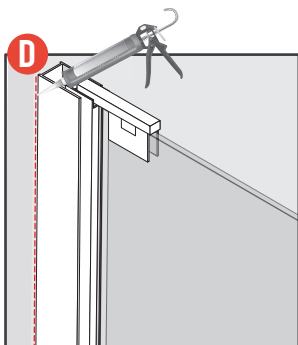
A.1
attach seal



B.1
Attach bottom seal
to door



C.1
Install pull hardware



D.1
Silicone inside and
out of side rails to
prevent water
leakage

