

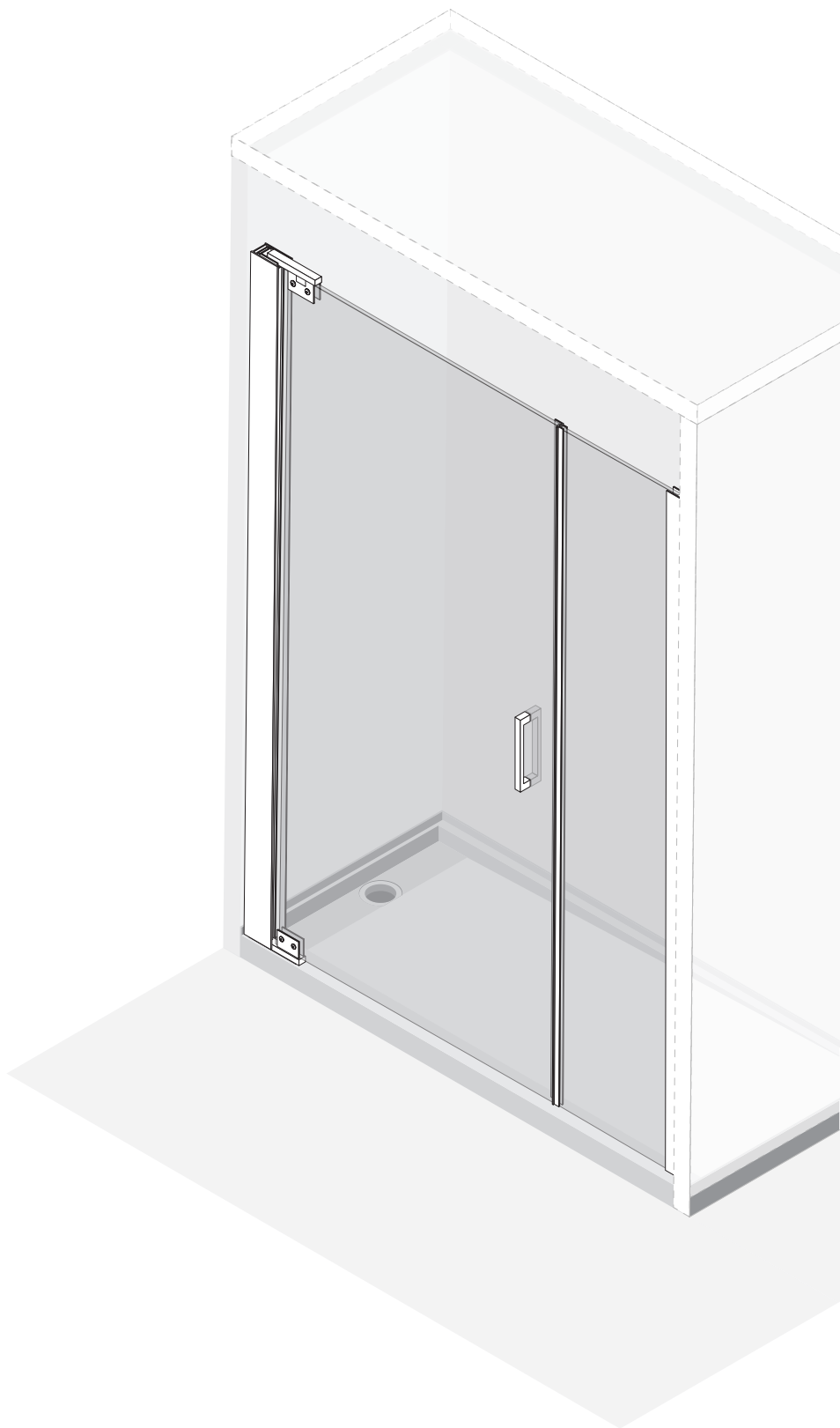
Architectural
Concepts

FREMONT

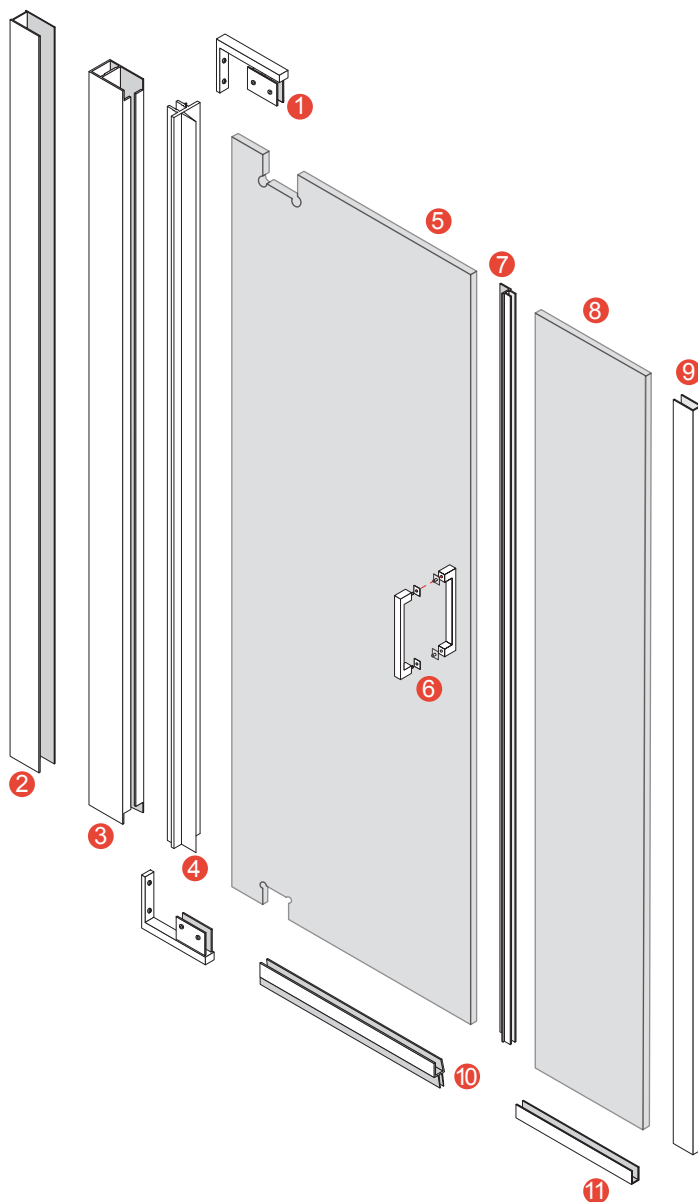
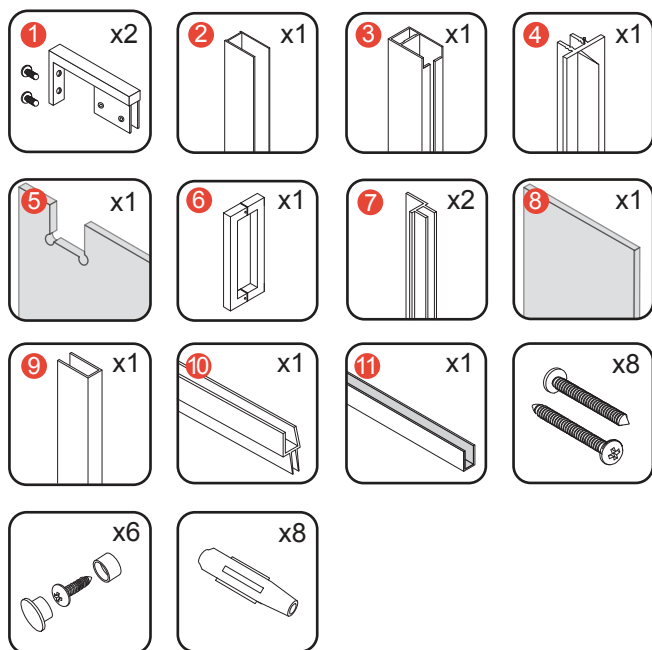
Hinged Pivot Shower Enclosure
with Fixed Panel
Installation Instructions

76" OA Height
Stocked size up to 32"
Larger custom widths available
Optional inline panel

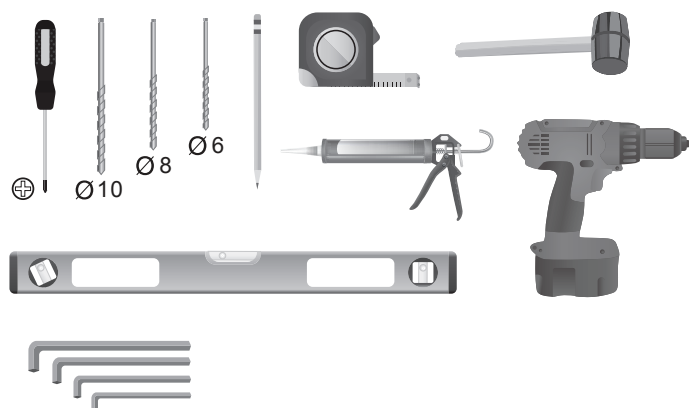
Customization Options Available



HARDWARE INCLUDED

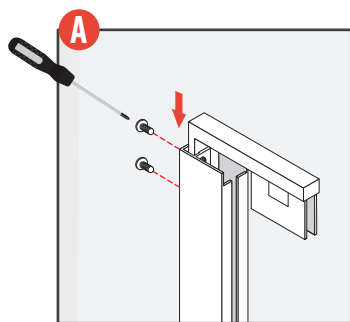


TOOLS NEEDED

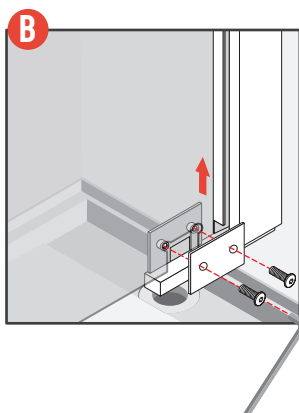
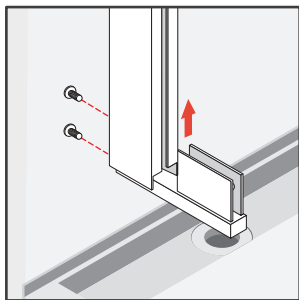


Step 1**A.1**

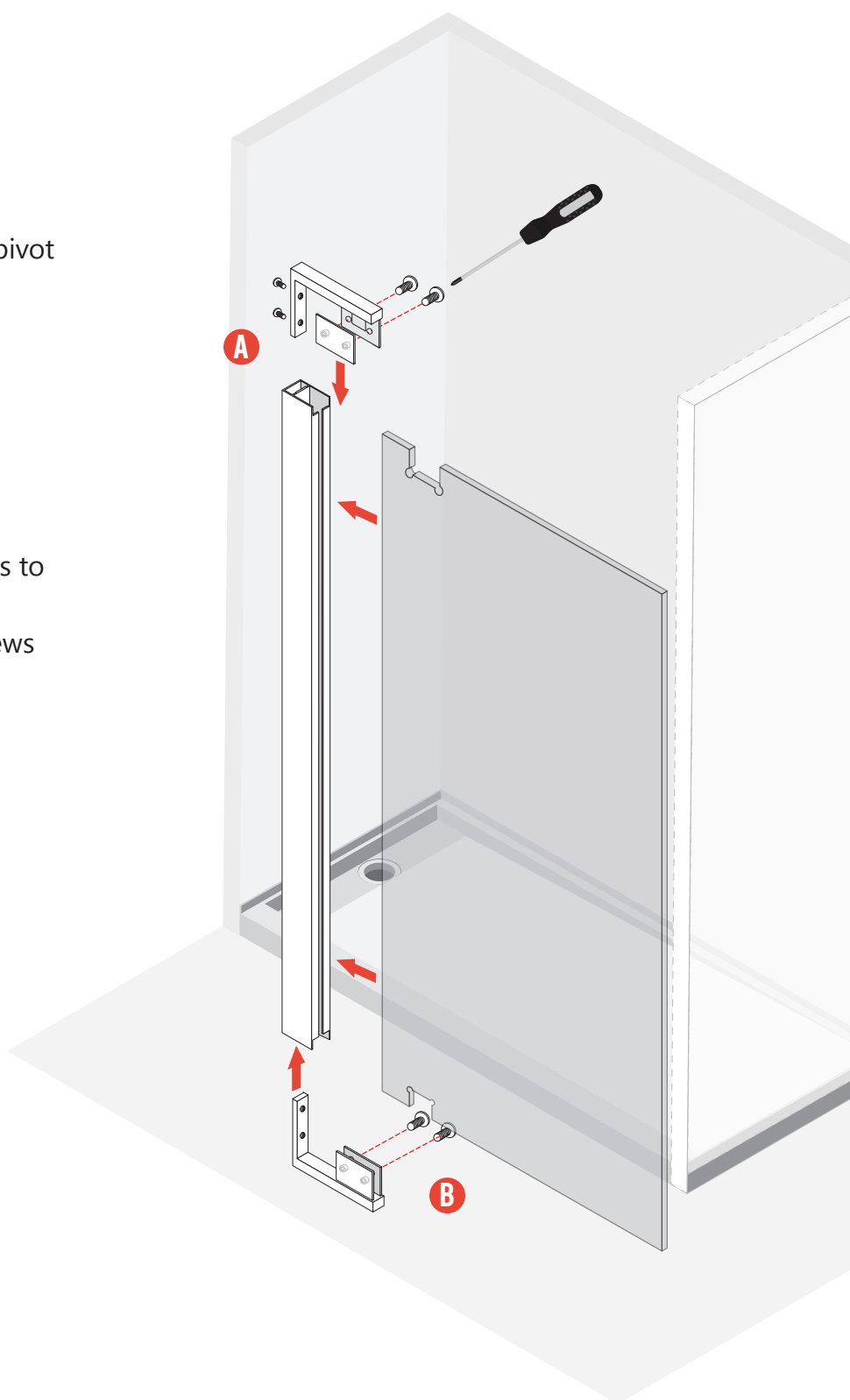
Mount top pivot
bracket

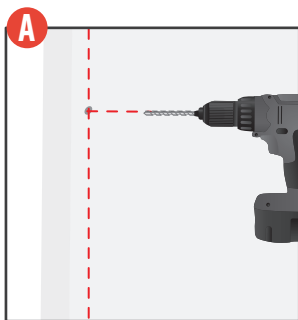
**A.2**

Mount bottom pivot
bracket

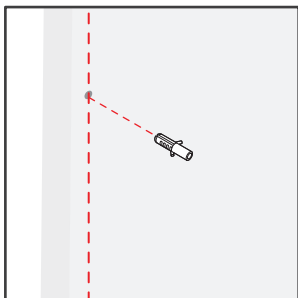
**B.1**

Remove brackets to
insert glass and
reinsert hex screws
to hold securely

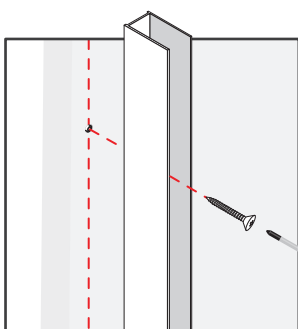


Step 2**A.1**

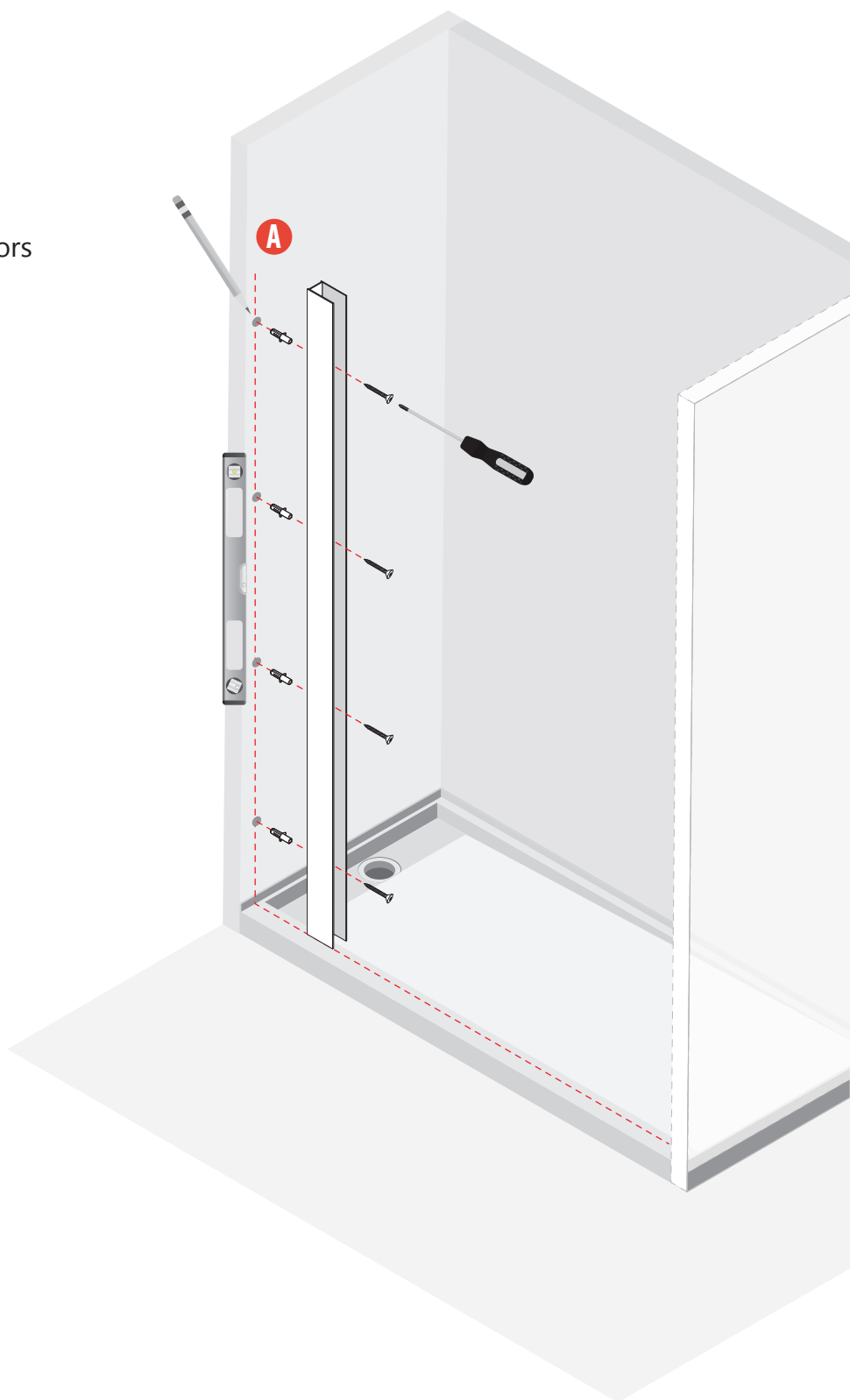
Mark and drill 4
holes to hold side
rail

**A.2**

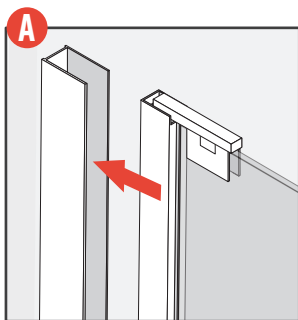
Insert wall anchors

**A.3**

Mount side rail

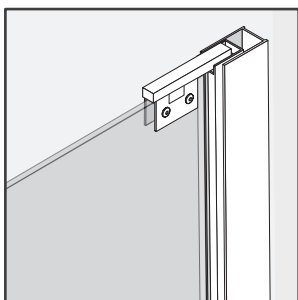
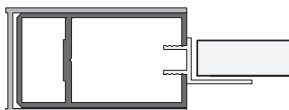


Step 3



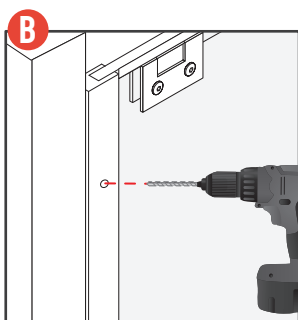
A.1

Slide in the side channel and adjust as needed for the shower door



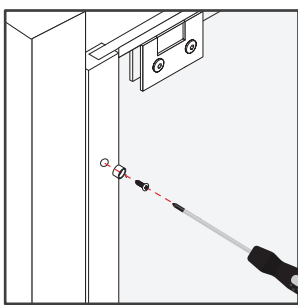
A.2

Channel affords 1" of adjustment to allow flexibility to fit variable opening widths as well as accommodate for out-of-square conditions



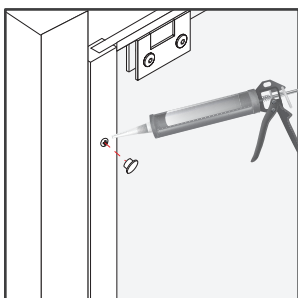
B.1

Mount the screws into the rail on the interior jamb after adjusting for level fit



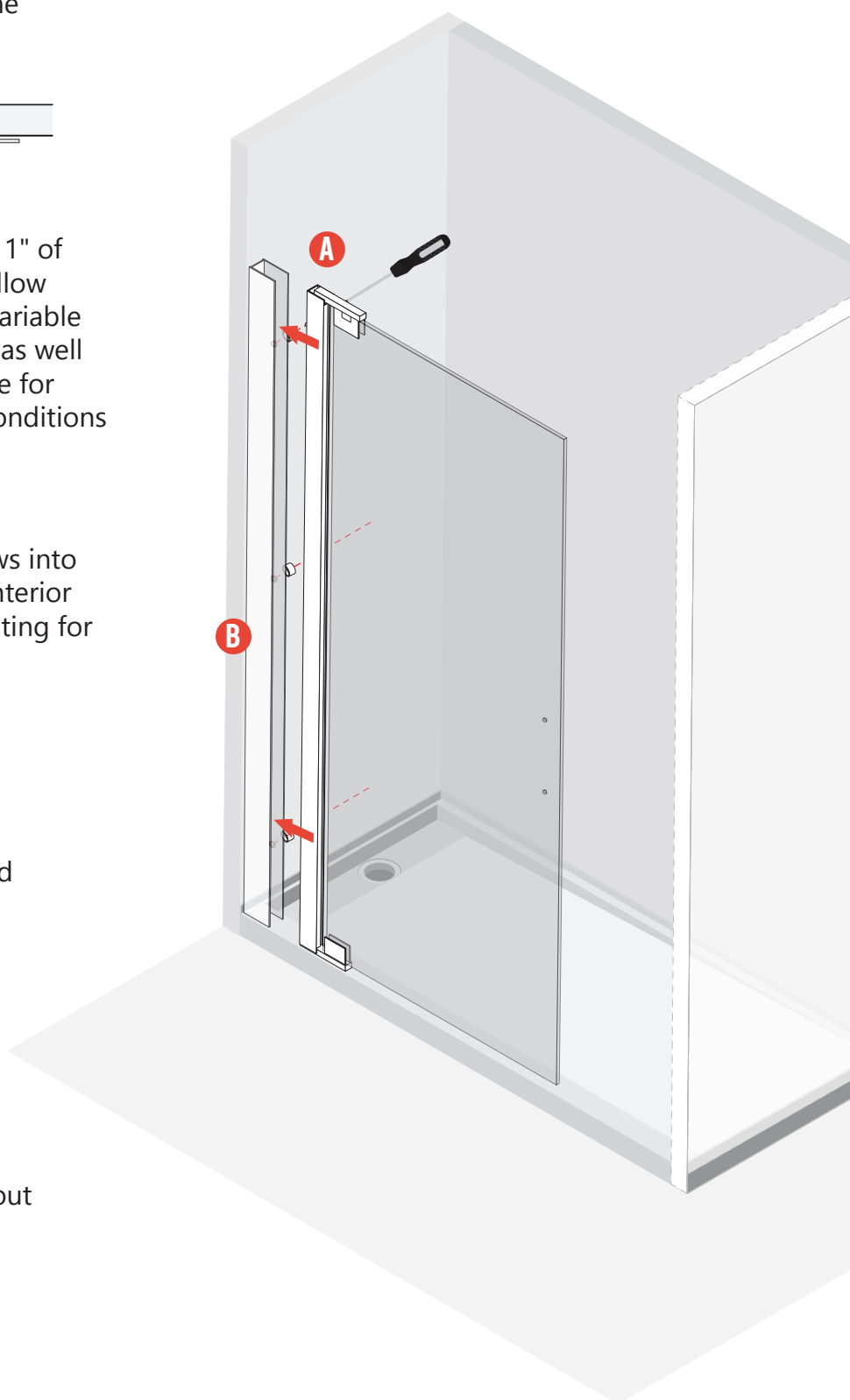
B.2

Insert spacer and screw to hold

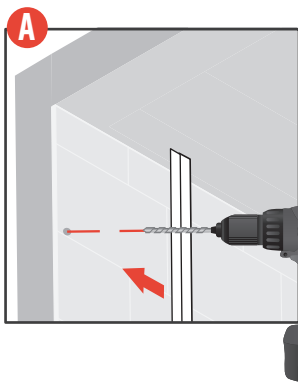


B.3

Apply small amount of silicone to prevent water leakage before applying cap

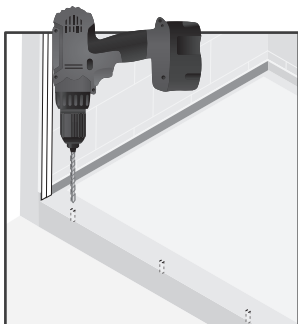


Step 4



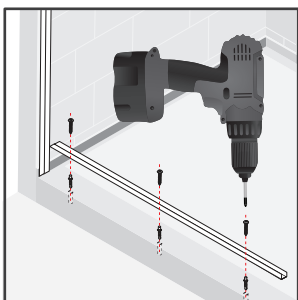
A.1

Level against the wall, mark and drill the holes



A.2

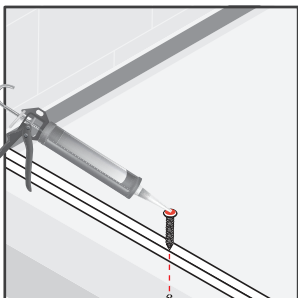
Drill holes where desired to permanently anchor U-channel in place



A.3

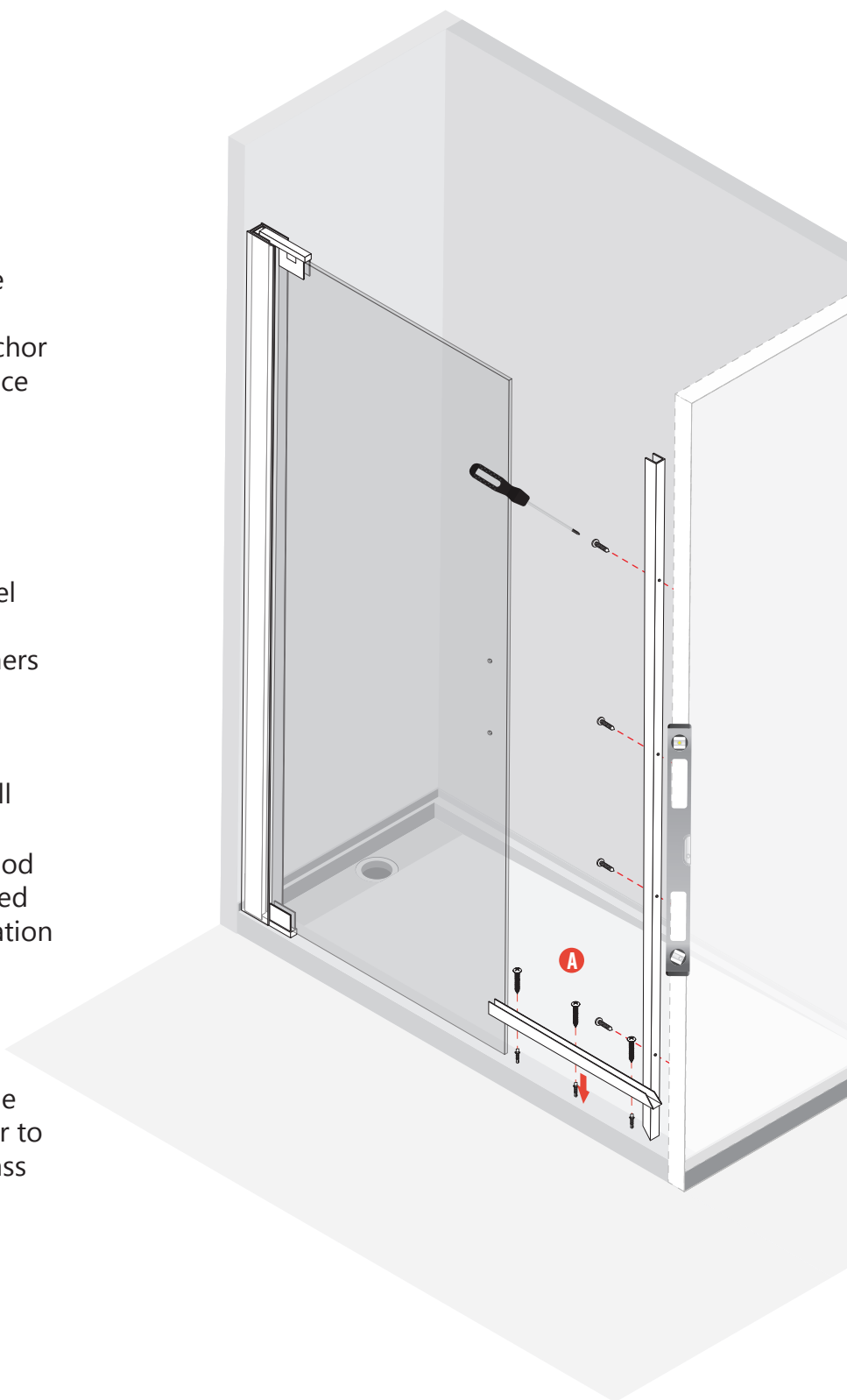
Mount U-channel with desired fasteners. Fasteners must hit solid blocking or be installed with adequate drywall

anchors to support the weight. Unique anchors to support this installation method are not included and would be determined by the installers evaluation of the application

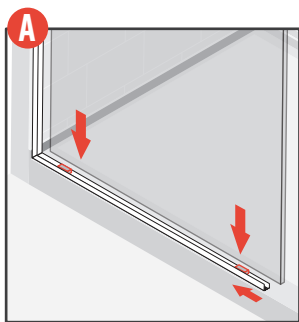


A.4

Apply silicone sealant over the screws to seal the penetration prior to installing the glass

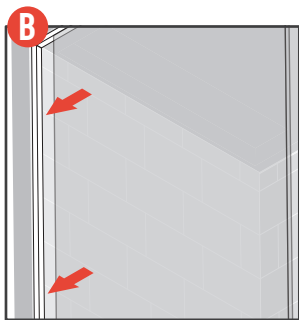


Step 5



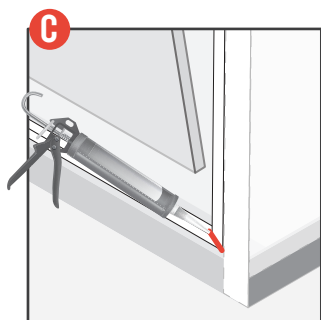
A.1

Drop into bottom
U-channel with
setting blocks



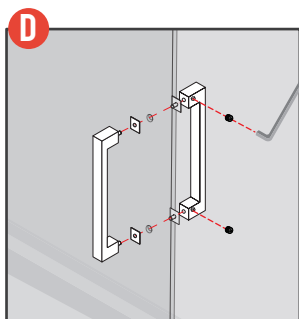
B.1

Gently slide into
side channel



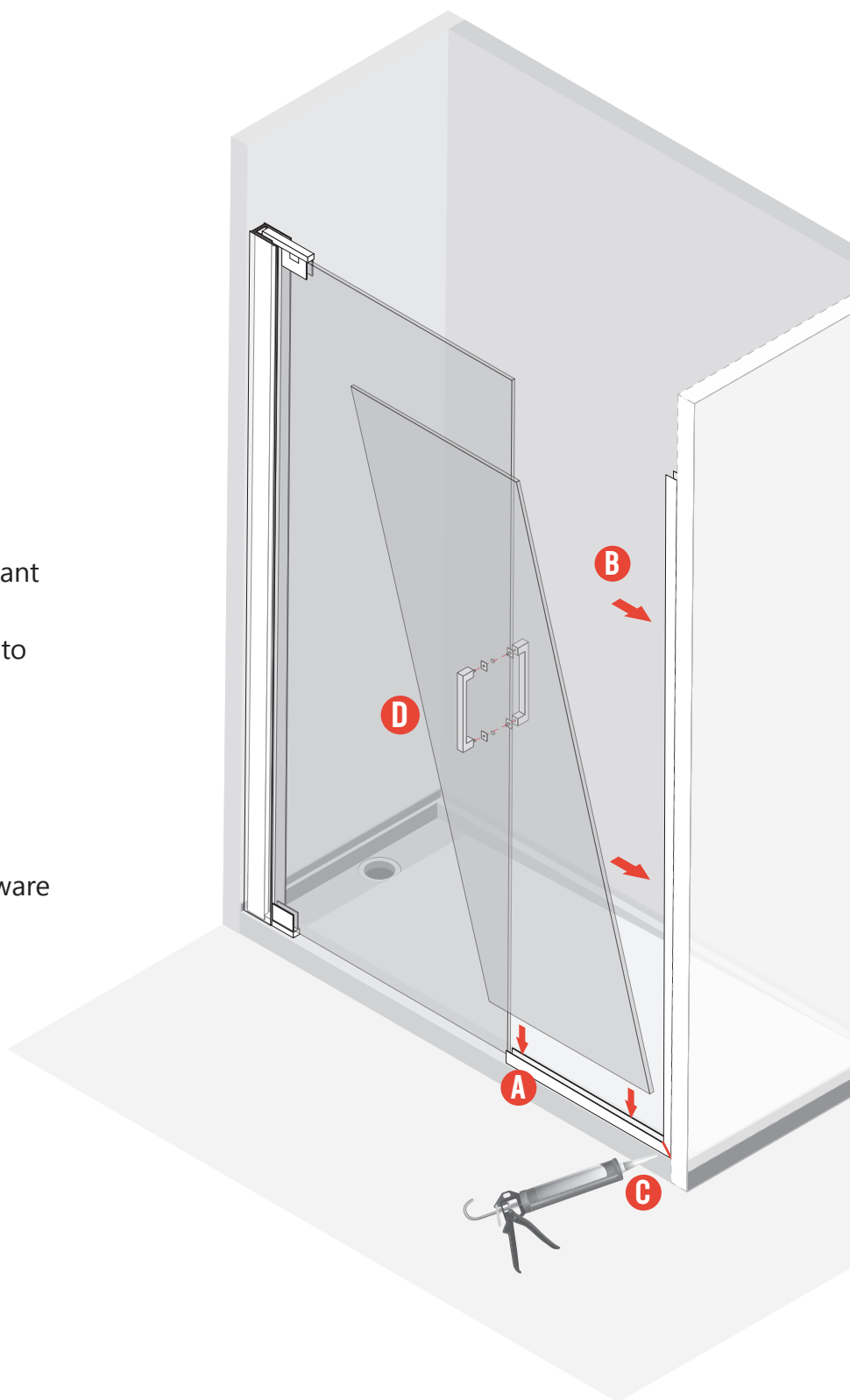
C.1

Use silicone sealant
to seal inside of
miter joint prior to
installing glass
panel

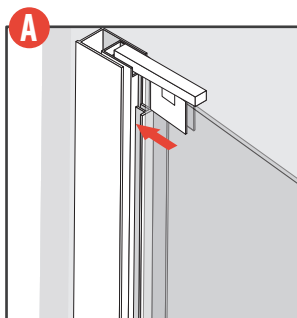


D.1

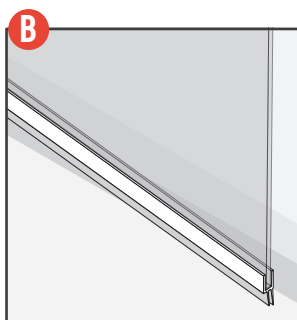
Install pull hardware



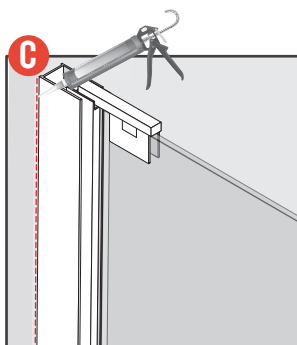
Step 6



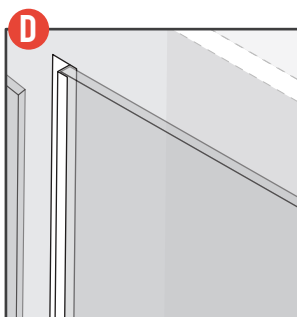
A.1
attach seal



B.1
Attach bottom seal
to door



C.1
Silicone inside and
out of side rails,
u-channel and
connecting
substrate to prevent
water leakage



B.1
Install vertical
strike seal,
measuring for
proper height
from top of U
channel to top of
glass door, and
trim accordingly

