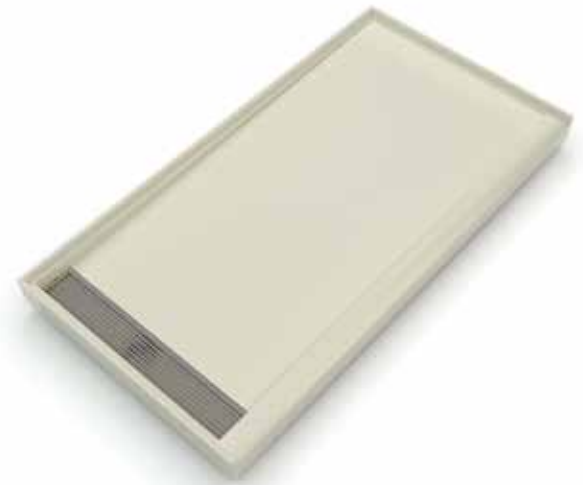




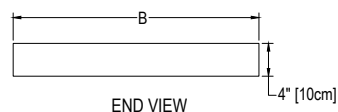
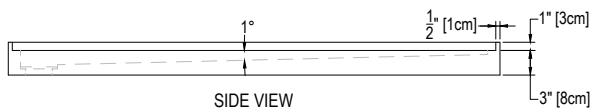
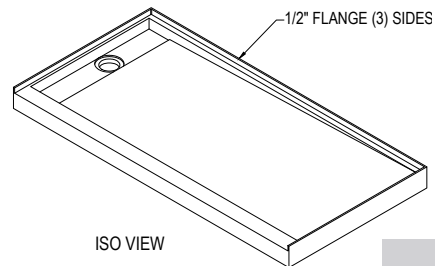
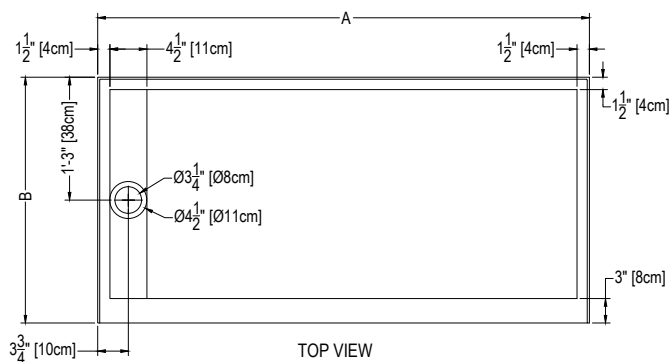
32 X 60 OFF-SET TRENCH DRAIN

Cultured Marble Shower Pan

- PRODUCT:** Shower Pan
SERIES: Trench Drain
MODEL: AC-TDOS3260T3
APPLICATION: Shower Base
DIMENSIONS: 32" (81cm) Deep x 59.75" (152cm) Long x 4" (10cm) Tall
Drain Centered at 15" (38cm), Trench Width 4.5" (11.4cm)
Threshold Width 3" (7.6cm), 1.5" (4cm) & 1.75" (4cm)
COLOR: See Color Options Sheet
FINISH: Matte or Gloss
MATERIAL: Solid One-Piece Cultured Marble
INSTALLATION: Refer to Installation Guide
ATTRIBUTES: Permanently Sealed Surface
Textured Non-slip Finish
Mold, Mildew and Bacteria Resistance
Abrasion Resistant
Stainless Steel Solid or Perforated Drain Cover
Easy Install
Easy Maintenance
ASTM F 462 & CSA B45.5-11 IAPMO Z124-11 compliant



DIMENSIONS:



NOTE: PAN DIMENSIONS VARY $\pm 1/8$ "

**Architectural
Concepts**

888.248.2724

720.259.5358

info@archconceptsllc.com

18499 Longs Way, Suite 102
Parker, CO 80134

archconceptsllc.com