



Architectural Concepts / Door Collection

Clearly Different





A300  
Square Sticking (SS)  
Flat Panel (F)

# Choosing the Right Door Made Easy

When it comes to selecting the right door for your project, we're with you every step of the way. We pride ourselves on creating doors that match your design vision, make functional sense for your space and fall within your budget.

1. Choose Door Style
2. Choose Door Details:  
Sticking Profile, Panel Option, Glass Option or Mirror
3. Choose Application:  
Barn Door, Swing Door or Pair



A500  
Square Sticking (SS)  
F Panel (F)  
AC9000 Barn Door Track  
ACM06312 Pull



A300  
Square Sticking (SS)  
White Lami Glass  
ACCL80 Barn Door Track  
AC5310 Pull

## What is the Right Door for the Opening?

We understand the different needs of every door opening. We'll help you recognize issues of durability for those high traffic areas, considerations of functionality for the given space, and the style demanded by your design and the aesthetics of the environment.



# MDF



MDF (Medium Density Fiberboard) is a smart choice for many of your interior door needs. Not only are MDF doors stable, durable and environmentally friendly, but our super-refined MDF doors provide a remarkably smooth finish and outperform natural wood doors for painted applications.

Because of their homogeneous construction, MDF doors are more durable and resist warping, cracking and splitting. MDF allows us to build more stable and

architecturally correct doors and details.

MDF is an engineered wood product made from recycled and recovered wood fiber. Rest assured, we do not fill our MDF products with cheaper core materials (like many alternatives), and we never use low-density fiberboard.

*The MDF we use is superior to the competition. All our MDF is NAF (No Added Formaldehyde), is MR30 rated (30 times more moisture resistant than standard MDF), Carb II and TSCA Title VI compliant and all at no extra charge. We just believe you deserve the best!*

\* California Air Resources Board

\*\* No Added Urea Formaldehyde Medium Density Fiberboard

## What is MDF



CHIPS



SHAVINGS



SAWDUST



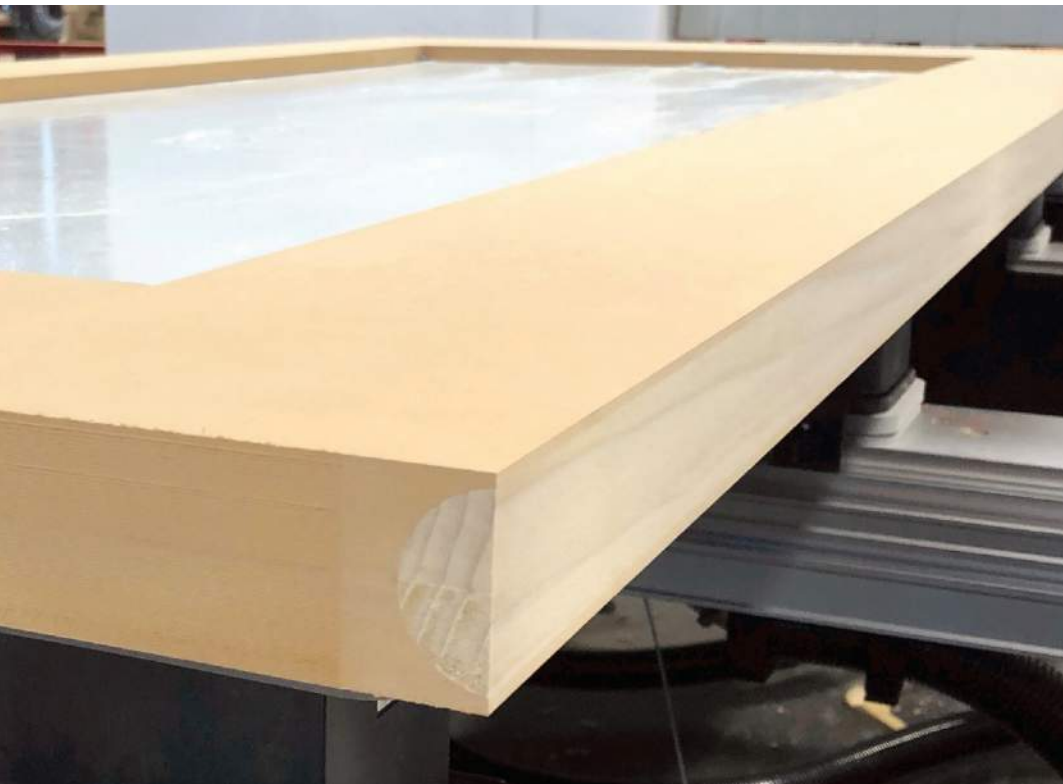
MDF FIBER WITH RESIN

MDF (Medium Density Fiber) is a 100% recycled product that was Green before Green was cool, making it a great choice for doors. MDF is first produced by taking raw wood residuals (Chips, Shavings and Sawdust), passing through a steam digesting process to soften the wood fibers and then refining them to their individual cell fibers.

**We are essentially taking the memory out of wood and putting it back together in a two-dimensional board.** These fibers are then dried and a thermal setting resin is introduced to the mix. From here, the matts of fiber are put into a steam heated platen press, applying heat and pressure, give us our net thickness needed.



# Superior Structural Wood Edge



MDF holds screws well through the face, but not as well through the edge. We have worked diligently on designing a wood edge that provides a complete glue bond, without any gaps, increasing the structural rigidity of the door. Our wood edge will accept all of your hardware with ease.

- 742 lbs Screw Pull Test
- WDMA Extra Heavy Duty

## Green Certified

**100% Recycled Materials**

**FSC Certified Raw Materials**

**MR30 (30 times more moisture-resistant than standard MDF)**

**NAF (No-Added Formaldehyde) Certified MDF**

EPA TSCA Title VI 40 CFR 770.17 No-added formaldehyde resins CARB ATCM 93120.3(c)

**LEED V4 Credit Certified**

Materials & Resources Credit

1. Environmental Product Declarations (EPD)  
Can be considered 1 manufacturer of 5 required by the credit.
2. Material Ingredients (NAF)
3. Sourcing of Raw Materials
  - Wood Products are FSC Certified
  - Recycled Content- 96.2% pre-consumer Recycled

Indoor Environmental Quality Credit (Low Emitting Materials)

- CARB ATCM 93120



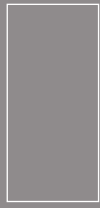
# Door Style



PANEL



GLASS



FLUSH



V-GROOVE

From panel doors to barn doors, the wide selection we offer at Architectural Concepts is sure to match your design vision and bring high-quality craftsmanship to your residential or commercial needs.

## Primer

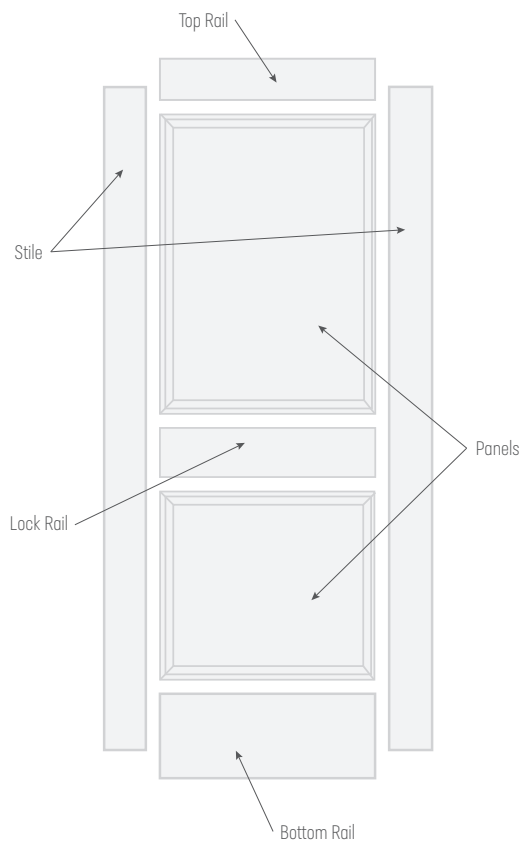
We use a high quality WDMA primer on all our doors. This is an acrylic latex primer intended for priming interior and approved exterior MDF and composite substrates. This product dries fast, sands easily and will fill open grain woods and MDF with little or no fiber raise. Works with any type of topcoat: Latex, Oil, Acrylic and Lacquer.

## Machining

With our state of the art CNC Machinery, we can prep any door, for any type of hardware.

## Stile & Rail

Our stile and rail doors allow us to craft virtually any style of door while bringing a high level of craftsmanship and quality to our clients. With meticulous construction and the use of premium materials (that exceed industry standards), our stile and rail doors provide sharper corners, better depth and more stability than other comparable doors.



## Engineered Stiles

We offer engineered stiles, built with an LSL core, which are excellent for large, oversized doors and pocket doors. It holds screws better than LVL and is available for 1-3/8", 1-3/4" and 2-1/4" doors.

# Prefinished Topcoat

We can prefinish your MDF door with our unique, waterborne Acrylic topcoat. As a value-added service, this waterborne sealant is designed for use as a self-sealing topcoat. A strong build providing a durable finish with very good hardness and chemical resistance compared to traditional acrylic latex and Nitrocellulose finishes.

Our topcoat meets or exceeds KCMA test requirements for finishes and is low VOC and UL GREENGUARD Gold Certified for low chemical emissions. We can accommodate most gloss ranges and can be toned to almost any color.

*Please ask your customer service representative for more information on pricing and lead times.*



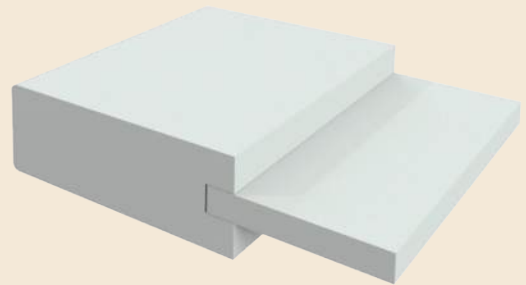
A202  
Square Sticking [SS]  
F Panel (F)  
AC5310 pull



# Panel Doors

The distinctive look of every panel door we manufacture is in the profile. The door profile is defined by the joints where the sticking and panels come together and the styles of each. Fortunately, we offer over 45 combinations of sticking and panel styles, so you can achieve the perfect profile look for your project. If not, we will be happy to help you through the process to create a custom solution.

Each of our panel doors are built with authentic stile-and-rail construction for architecturally correct results. You can choose from diverse panel door styles in configurations from one to nine panels.



Custom A300  
Square Sticking (SS)  
Flat Panel (F)  
Custom plant on Moldings

# Sticking Options

Sticking is the pattern cut into the interior edges of every stile and rail - and is an essential component in your door's overall style. Stiles and rails are the vertical and horizontal wood pieces that create the frame of a panel door.



ROMAN OGEE (OG)



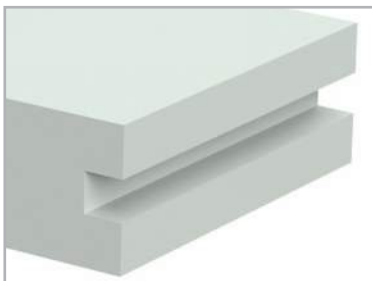
ONE STEP (OS)



COVE & BEAD (CB)



BEVEL (BV)



SQUARE STICK (SS)



QUARTER BEAD (QB)

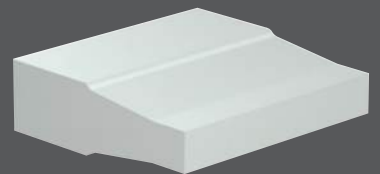


QUARTER ROUND (QR)

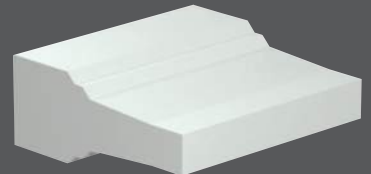
# Panel Options

We offer various panel styles that work with the sticking to complete the style of your door's distinctive profile. You can work with our experts to find a profile that is both unique, attractive and matches your planned design aesthetic.

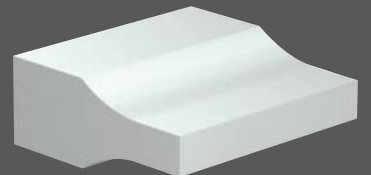
RAISED PANEL (R)



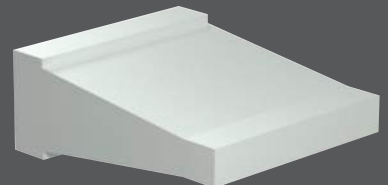
DOUBLE HIP PANEL (D)



SCOOP PANEL (S)



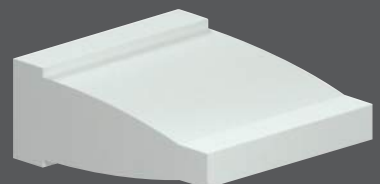
JUNIOR BEVEL PANEL (JR)



FLAT PANEL (F)

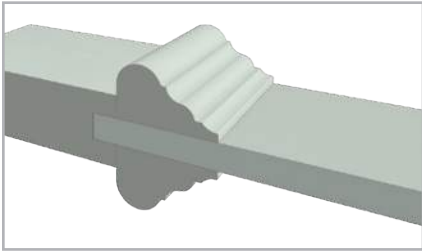


SENIOR RAISED PANEL (SR)

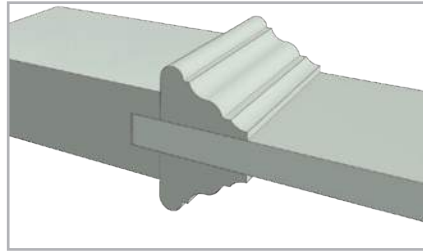


# Raised Moulding

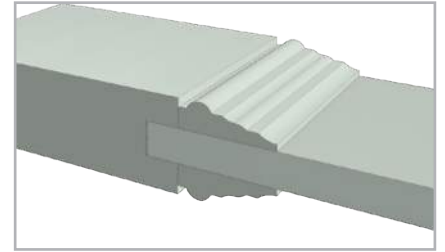
We have a wide selection of decorative applied mouldings that can be applied to your doors. If you don't see what you want, send us a sketch and we can build it.



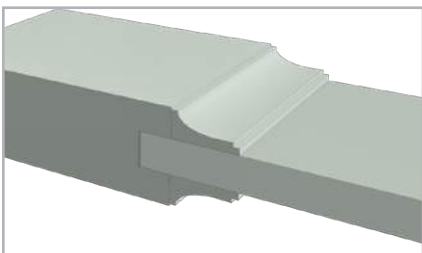
AC-001



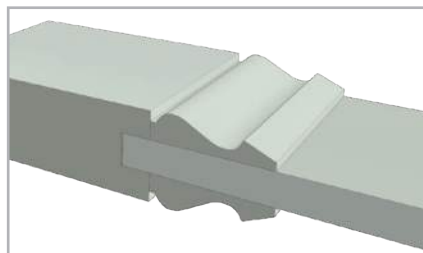
AC-002



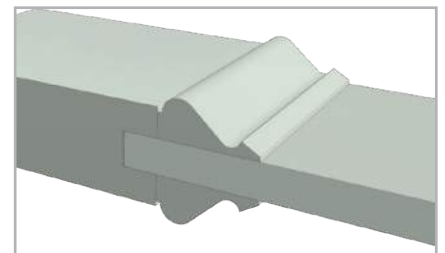
AC-003



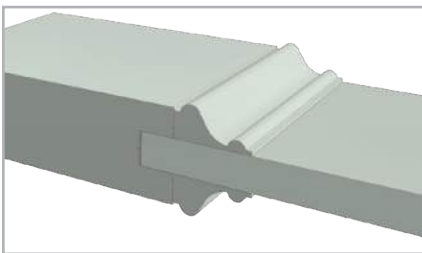
AC-004



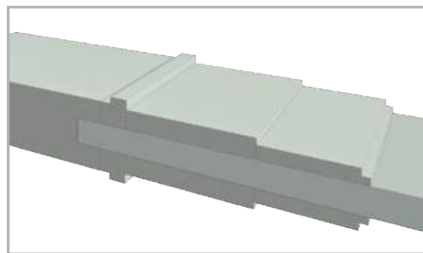
AC-005



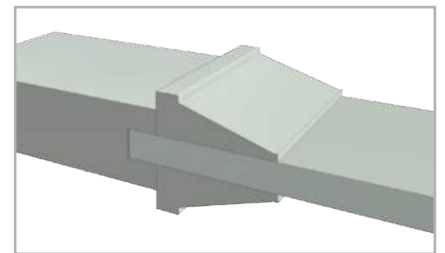
AC-006



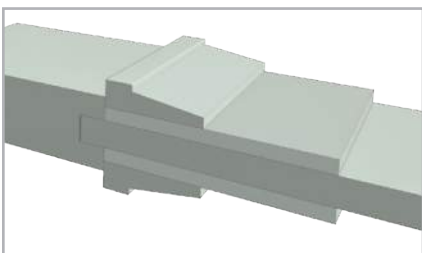
AC-007



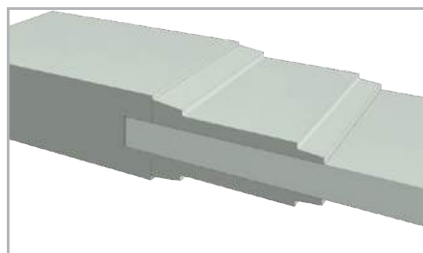
AC-008



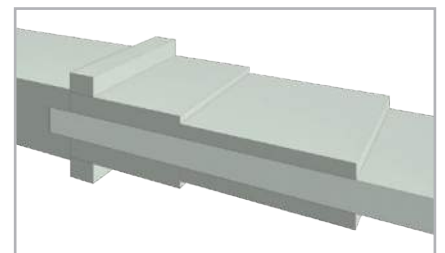
AC-009



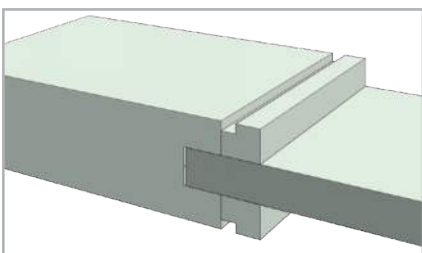
AC-010



AC-011



AC-012



QUIRK MOULDING (QM)





# Exterior Doors

## **ANY OF OUR DOORS CAN BECOME AN EXTERIOR DOOR**

We are incorporating Exterior MDF, with our Exterior Engineered Stiles to make an extremely durable door with unparalleled design flexibility.

Engineered Exterior Stiles and Rails which incorporate Armorite Exterior MDF and LSL Cores

Panels are made of Armorite Exterior MDF

Industry best Milesi Exterior Primer

Available for 1-3/4" and 2-1/4" doors

10 Year Limited Warranty

Milesi Exterior Pre-Finish available

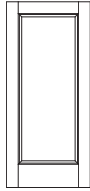




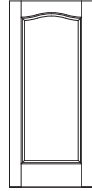
DC

Architectural Concepts / Door Collection

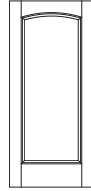
# Panel Doors



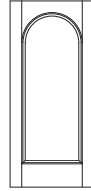
A100



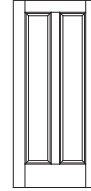
A101



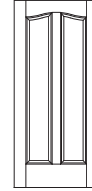
A103



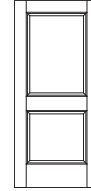
A105



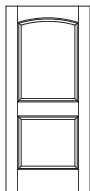
A200



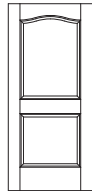
A201



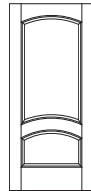
A202



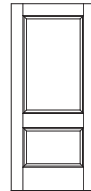
A203



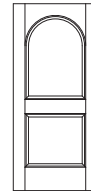
A204



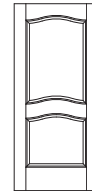
A205



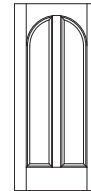
A206



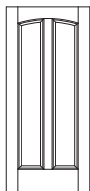
A207



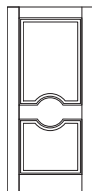
A208



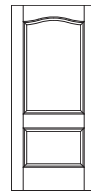
A209



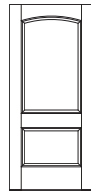
A213



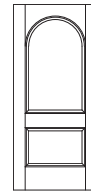
A216



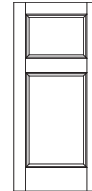
A217



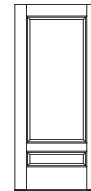
A218



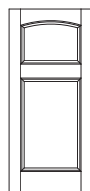
A219



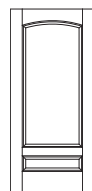
A220



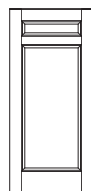
A221



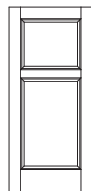
A222



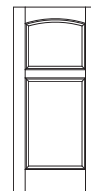
A223



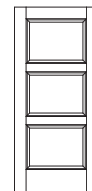
A224



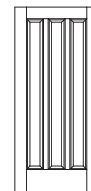
A225



A226

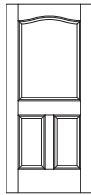
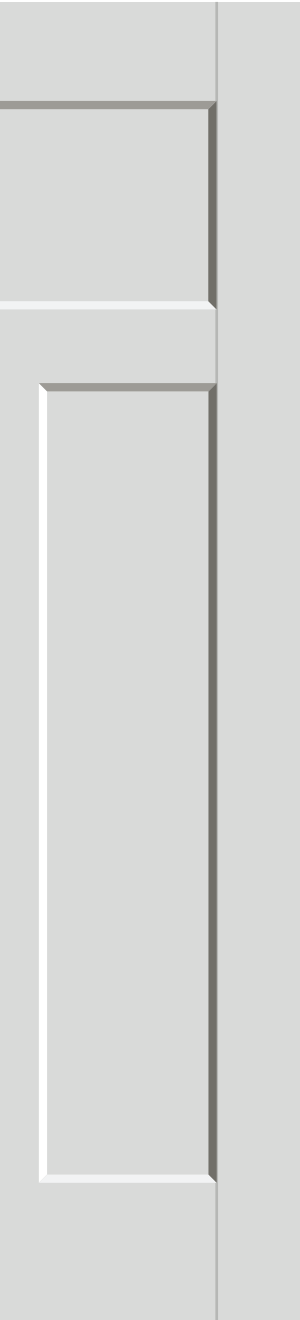
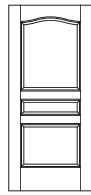
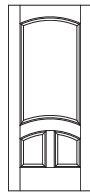
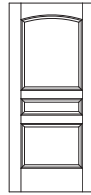
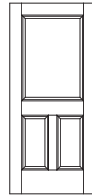
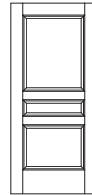
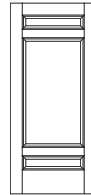
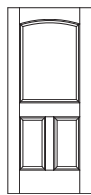
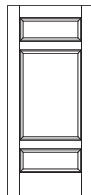
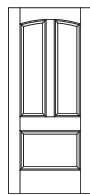
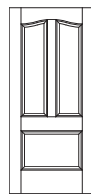
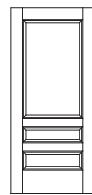
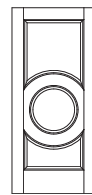
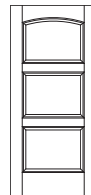
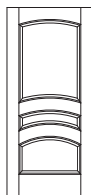
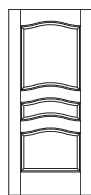
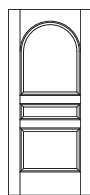
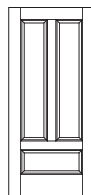
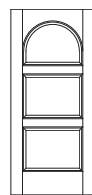
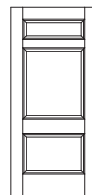
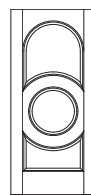
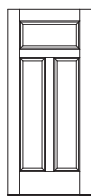
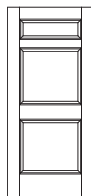
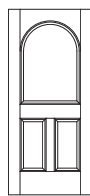
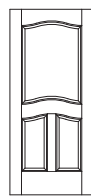
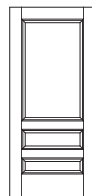
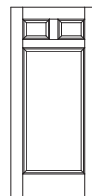
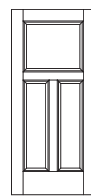


A300



A301




**A302**

**A303**

**A304**

**A305**

**A306**

**A307**

**A308**

**A309**

**A310**

**A311**

**A312**

**A313**

**A314**

**A315**

**A316**

**A317**

**A318**

**A319**

**A321**

**A322**

**A323**

**A324**

**A325**

**A326**

**A327**

**A328**

**A329**

**A330**

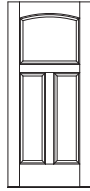




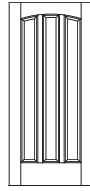

DC

Architectural Concepts / Door Collection

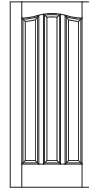
# Panel Doors



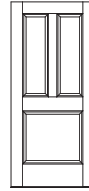
A331



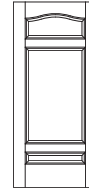
A332



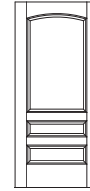
A333



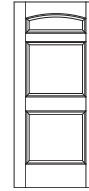
A334



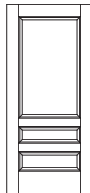
A335



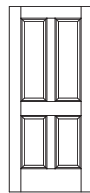
A336



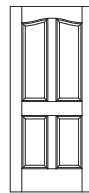
A337



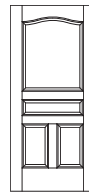
A338



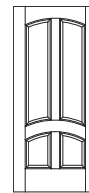
A400



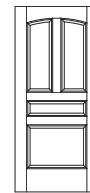
A401



A402



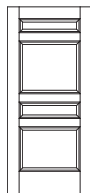
A403



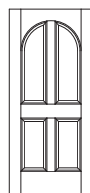
A404



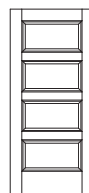
A405



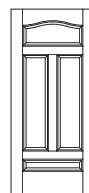
A406



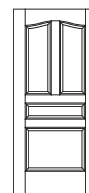
A407



A410



A411



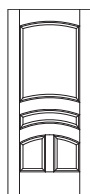
A412



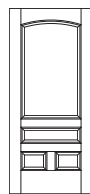
A413



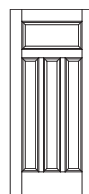
A414



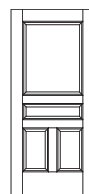
A415



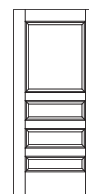
A417



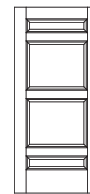
A419



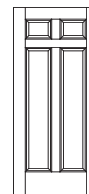
A420



A421

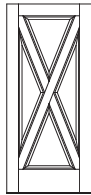


A422

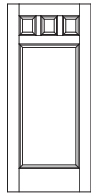


A423

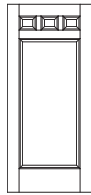




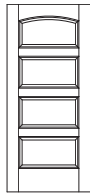
A424



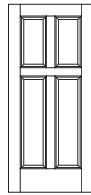
A425



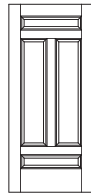
A426



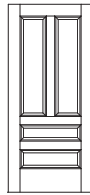
A427



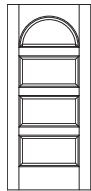
A428



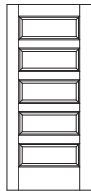
A429



A430



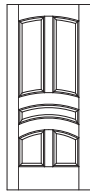
A431



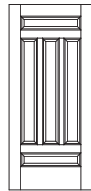
A500



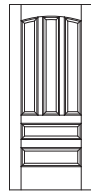
A501



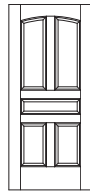
A502



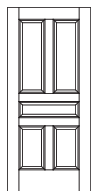
A503



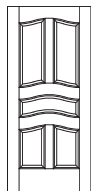
A504



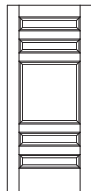
A505



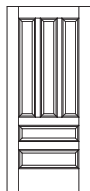
A506



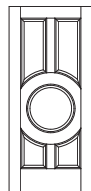
A507



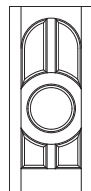
A508



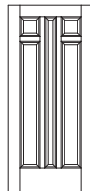
A509



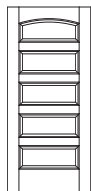
A510



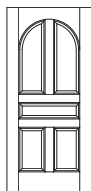
A511



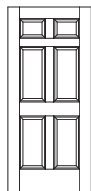
A512



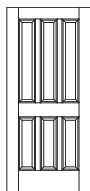
A513



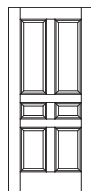
A514



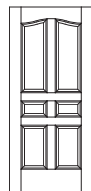
A600



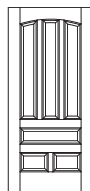
A601



A602



A603



A604

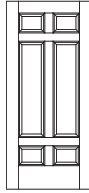




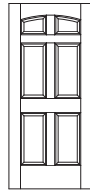
DC

Architectural Concepts / Door Collection

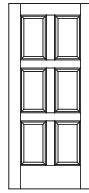
# Panel Doors



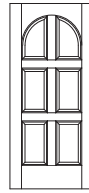
A605



A607



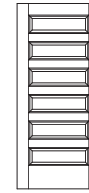
A608



A609



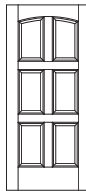
A610



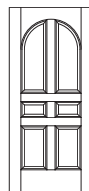
A611



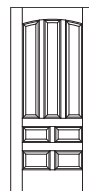
A612



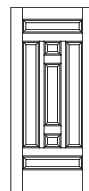
A613



A614



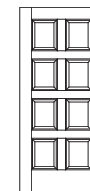
A700



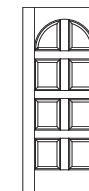
A701



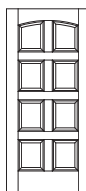
A702



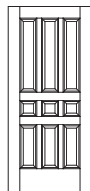
A800



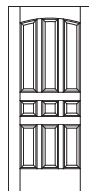
A801



A802



A900

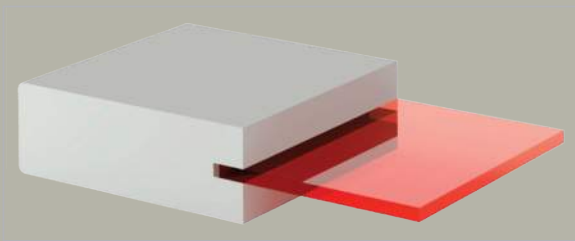


A901



# Glass Doors

Constructed with old-world craftsmanship, our glass doors enhance almost any space. Whether you're designing for an elegant entrance or a more intimate space, our experts can help you select the door type and glass panels that provide just the right balance of natural light, privacy and style.

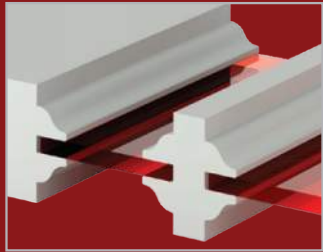


G100  
Quirk Moulding (QM)  
1/4" White Lami

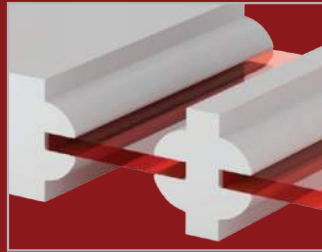




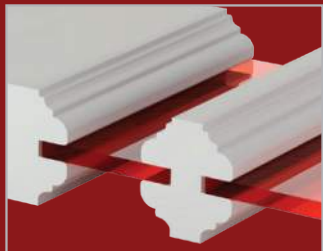
# Glass Door Profile Options



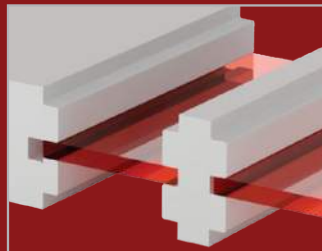
ROMAN OGEE SASH (OG)



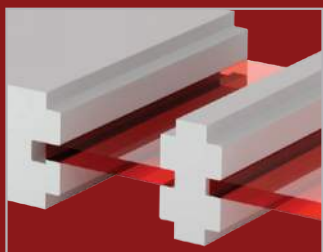
QUARTER ROUND SASH (QR)



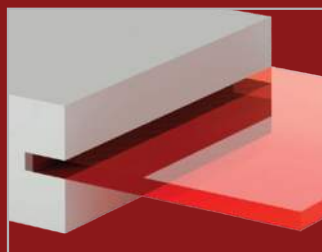
COVE & BEAD SASH (CB)



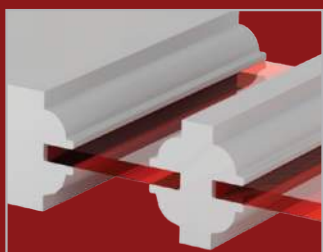
ONE STEP SASH (OS)



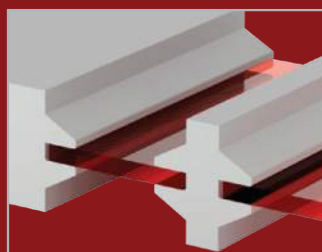
SQUARE STICK SASH (SS)



SQUARE STICK COMPRESSION FIT (SS)



QUARTER BEAD SASH (QB)

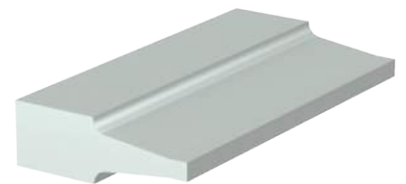


BEVEL SASH (BV)

# Glass Panel Options

Glass panels can often offer your door a visual aesthetic that wood doors cannot accomplish alone. Whether you're considering tinted or textured glass, or something with a more distinctive look, such as resin panels or cast glass, we can create the style you're searching for. Consult with our experts to find the perfect balance of natural light and privacy that your project demands.

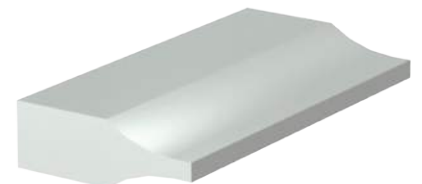
RAISED PANEL (R)



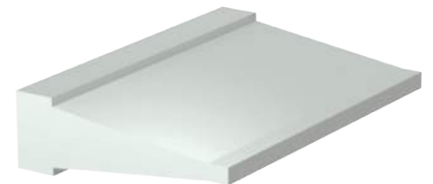
DOUBLE HIP PANEL (D)



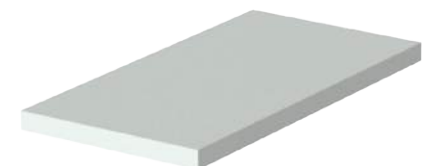
SCOOP PANEL (S)



JUNIOR BEVEL PANEL (JR)



FLAT PANEL (F)



SENIOR RAISED PANEL (SR)



# Standard Glass Options



A100  
Bevel Sticking (BV)  
Mirror  
ACCL80SC Barn  
Door Track



CLEAR



RAIN



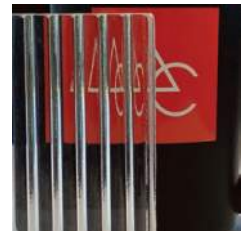
MIRROR



ANTIQUE



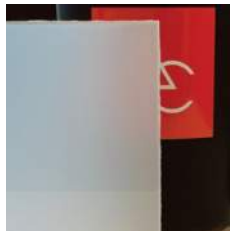
FROSTED



FLUTE LITE NARROW



FLUTE LITE GROOVE



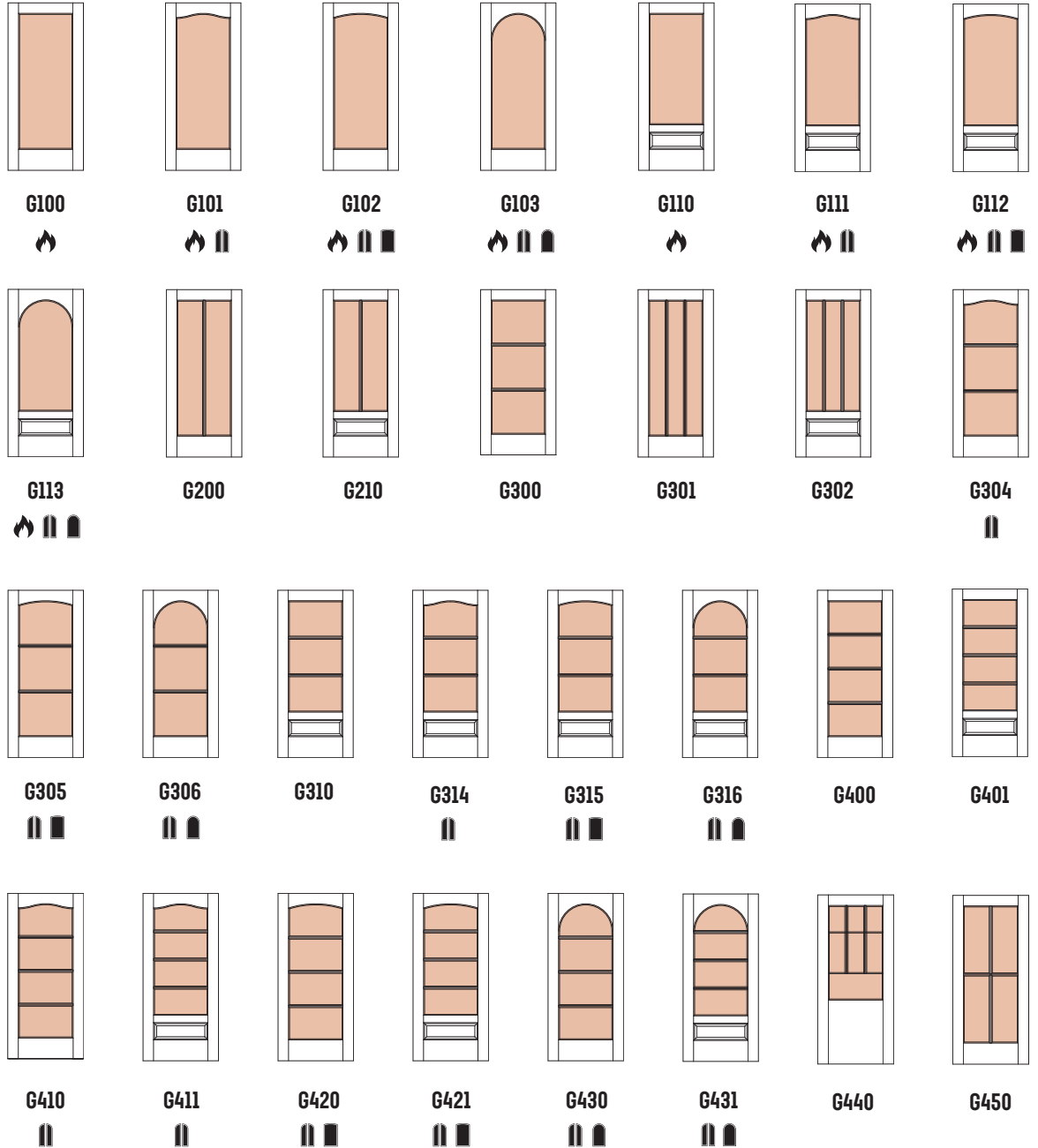
WHITE LAMI



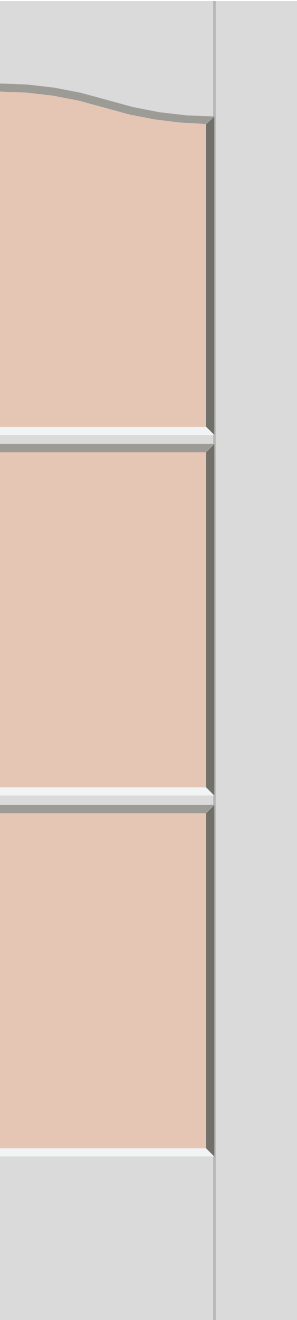
DC

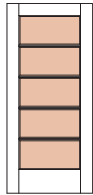
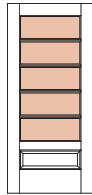
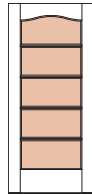
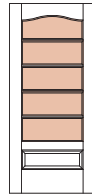
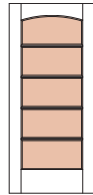
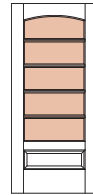
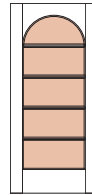
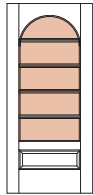
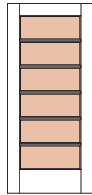
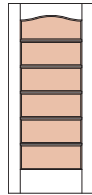
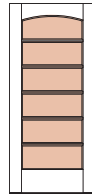
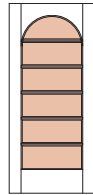
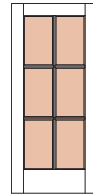
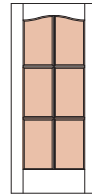
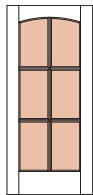
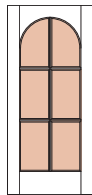
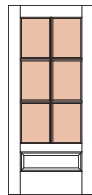
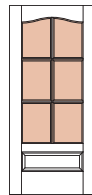
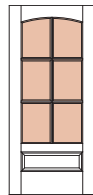
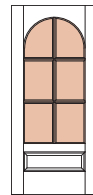
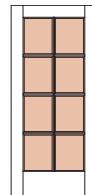
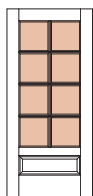
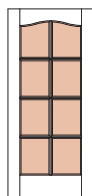
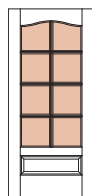
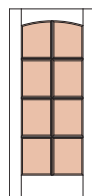
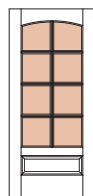
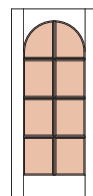
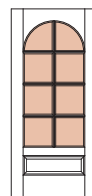
Architectural Concepts / Door Collection

# Glass Panel Doors



# Glass Panel Doors



						
G500	G501	G510 Common Arch Pair	G511 Common Arch Pair	G520 Common Arch Pair Arch-Top	G521 Common Arch Pair Arch-Top	G530 Common Arch Pair Arch-Top
						
G531 Common Arch Pair Arch-Top	G600	G601 Common Arch Pair	G602 Common Arch Pair Arch-Top	G603 Common Arch Pair Arch-Top	G606	G607 Common Arch Pair
						
G608 Common Arch Pair Arch-Top	G609 Common Arch Pair Arch-Top	G616	G617 Common Arch Pair	G618 Common Arch Pair Arch-Top	G619 Common Arch Pair Arch-Top	G800
						
G810	G820 Common Arch Pair Arch-Top	G821	G830	G831	G840	G841

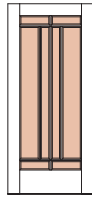




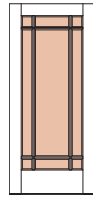
DC

Architectural Concepts / Door Collection

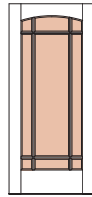
# Glass Panel Doors



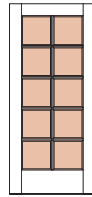
G850



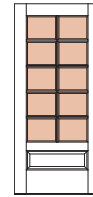
G900



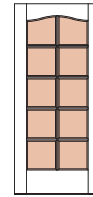
G901



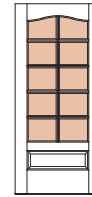
G1000



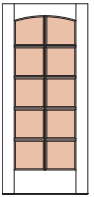
G1001



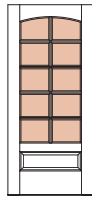
G1010



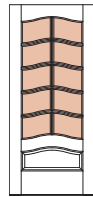
G1011



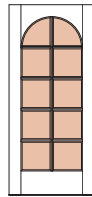
G1020



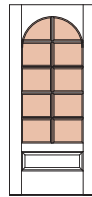
G1021



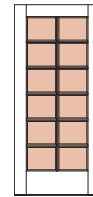
G1030



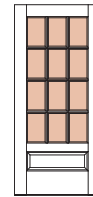
G1040



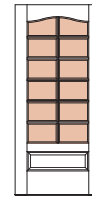
G1041



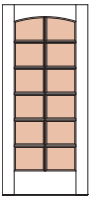
G1200



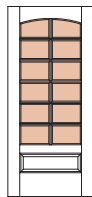
G1210



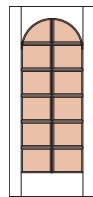
G1221



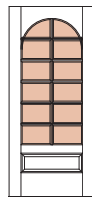
G1230



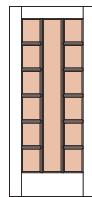
G1231



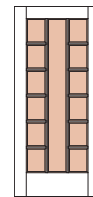
G1240



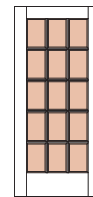
G1241



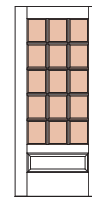
G1250



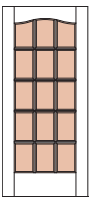
G1300



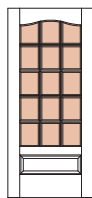
G1500



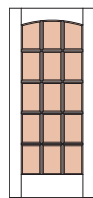
G1501



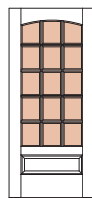
G1510



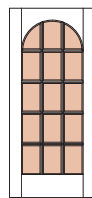
G1511



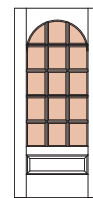
G1520



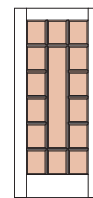
G1521



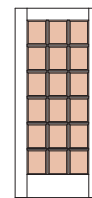
G1530



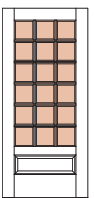
G1531



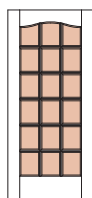
G1540



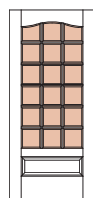
G1800



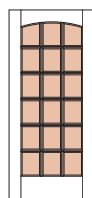
G1801



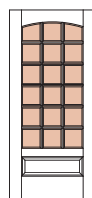
G1810



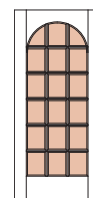
G1811



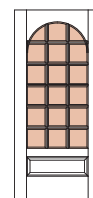
G1820



G1821



G1830



G1831

# Panel Lite Doors



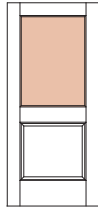
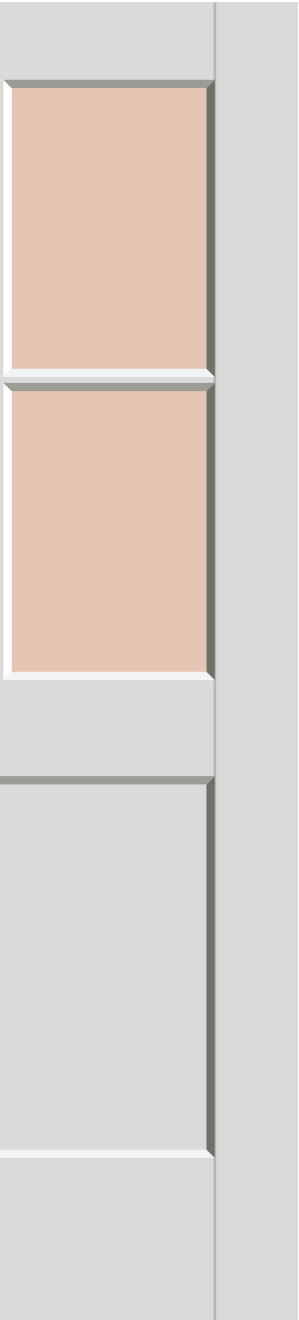
P100  
Square Sticking (SS)  
1/4" Frosted Glass  
AC9000 Barn Door Track  
Matte Black



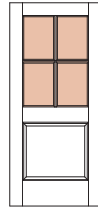
DC

Architectural Concepts / Door Collection

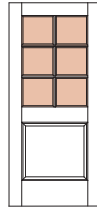
# Panel Lite Doors



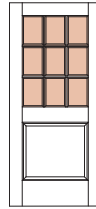
P100



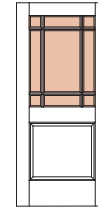
P104



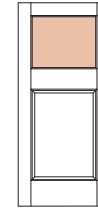
P106



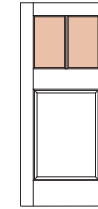
P109



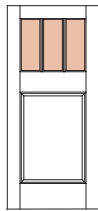
P119



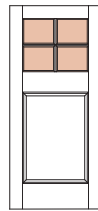
P130



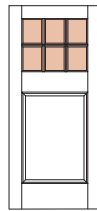
P132



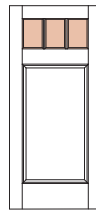
P133



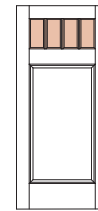
P134



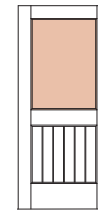
P136



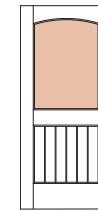
P143



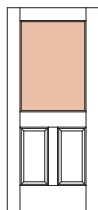
P144



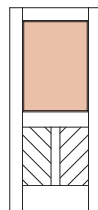
P145



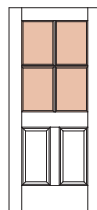
P146



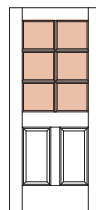
P200



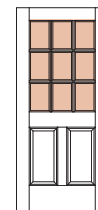
P202



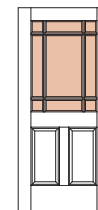
P204



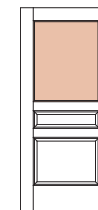
P206



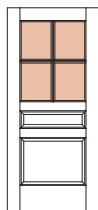
P209



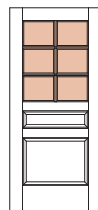
P219



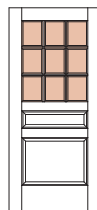
P220



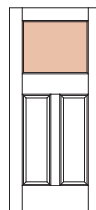
P224



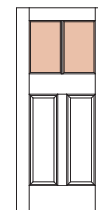
P226



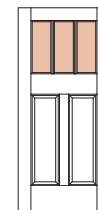
P229



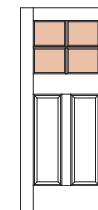
P230



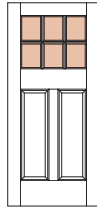
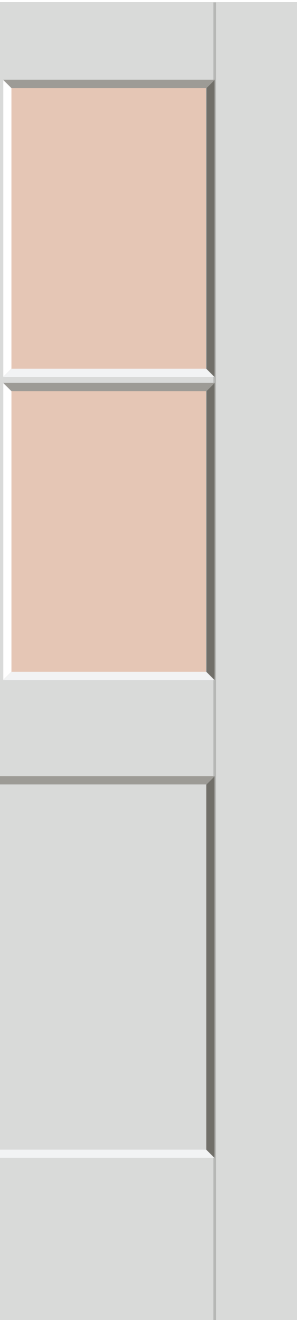
P232



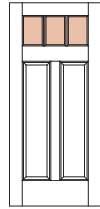
P233



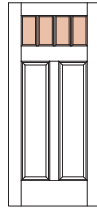
P234



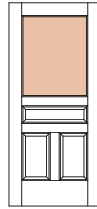
P236



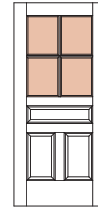
P243



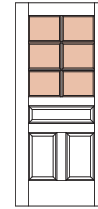
P244



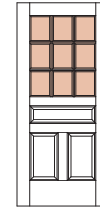
P300



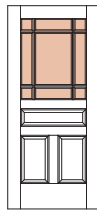
P304



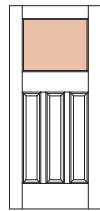
P306



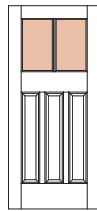
P309



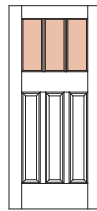
P319



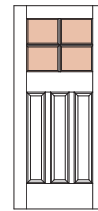
P330



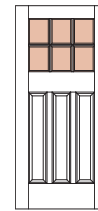
P332



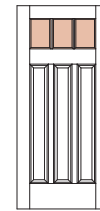
P333



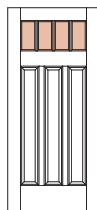
P334



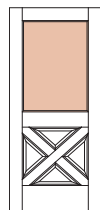
P336



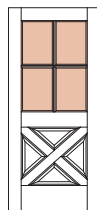
P343



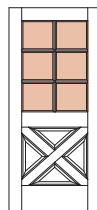
P344



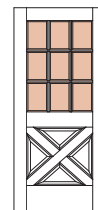
P400



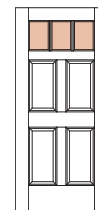
P404



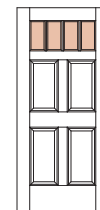
P406



P409



P443

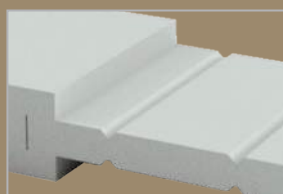


P444



# V-Groove Series Profile Options

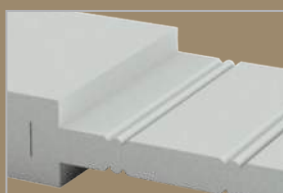
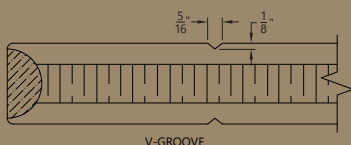
For the classic look of a plank door, we recommend our V-Groove Series doors. Although built with the solidness of a stile-and-rail construction, each V-Groove door features a precision carved tongue-and-groove that gives the rustic appearance of a plank-style door.



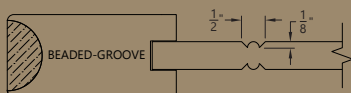
STANDARD V-GROOVE PROFILE



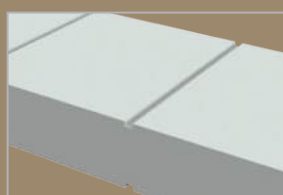
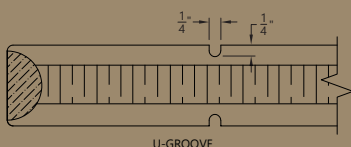
STANDARD V-GROOVE FLUSH PROFILE



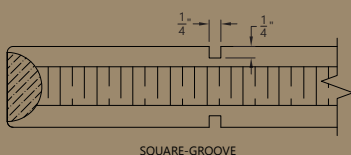
BEADED V-GROOVE PROFILE



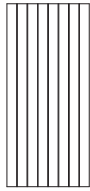
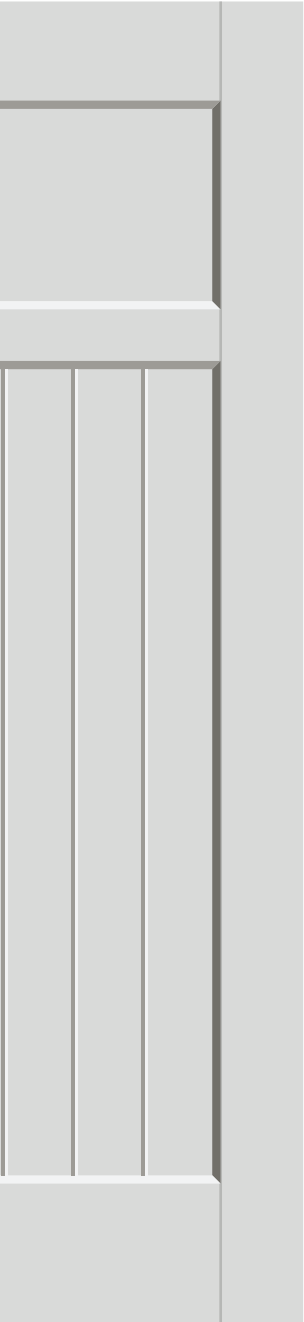
U-GROOVE FLUSH PROFILE



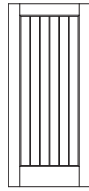
SQUARE GROOVE FLUSH PROFILE



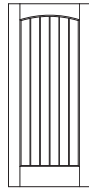
Custom V100  
U-Groove MDF  
AC4251 Flush Pull  
AC9000 Barn Door Track



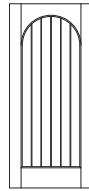
V100



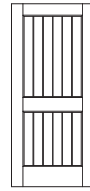
V101



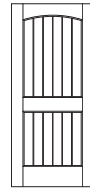
V103



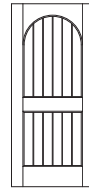
V104



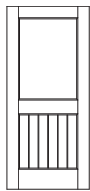
V202



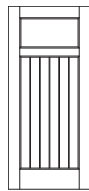
V203



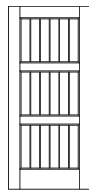
V207



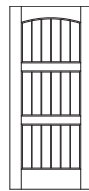
V210



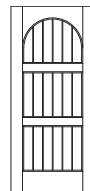
V215



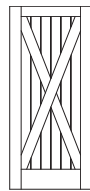
V300



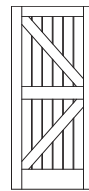
V302



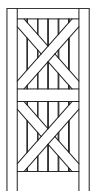
V303



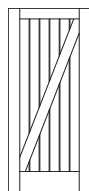
V401



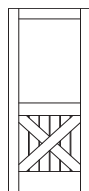
V403



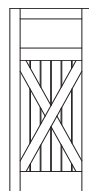
V404



V405



V410

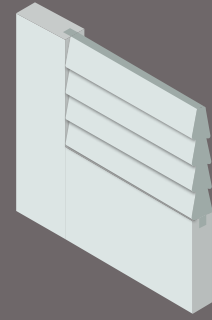


V415



# Louver Door Collection

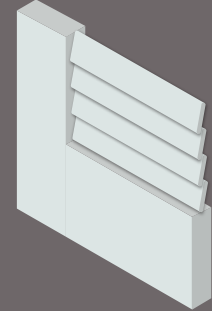
Our striking louver doors provide not only unique style options, from traditional plantation style to coastal contemporary, but also serve a functional purpose as well, by offering both privacy and the airflow needed for certain rooms and spaces. Our louver panels are available in both vented and false configurations and can be added to most of our panel doors.



FALSE LOUVER



No Airflow

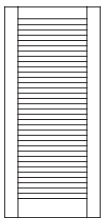


VENTED LOUVER

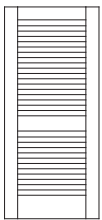


Airflow

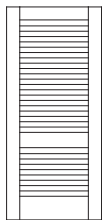
## Louver Doors



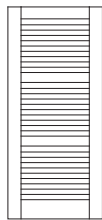
L100



L202



L206



L300

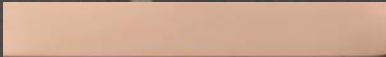


L202  
False Louver

# Custom Flush Doors

Our flush modern doors offer a sturdy, functional option for certain applications and aesthetic needs. Every one of our flush doors is engineered to resist warping and twisting. Depending on the size, most of our flush doors can be quite heavy. To reduce the weight, you can choose to add a tubular core, which reduces the weight but maintains the structural stability. For extremely large doors, inquire about our aluminum honeycomb construction.

SATIN ROSE GOLD



POLISHED ROSE GOLD



SATIN STAINLESS



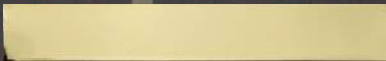
POLISHED STAINLESS



SATIN BRASS



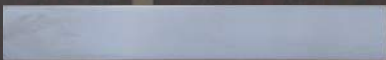
POLISHED BRASS



SATIN BLACK



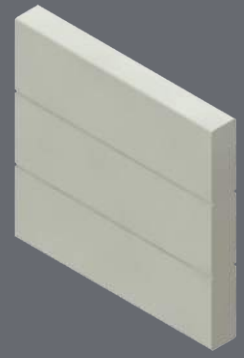
POLISHED BLACK



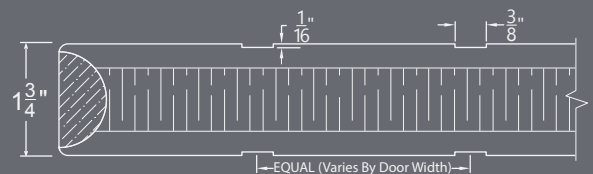
F501  
Stainless Inlay



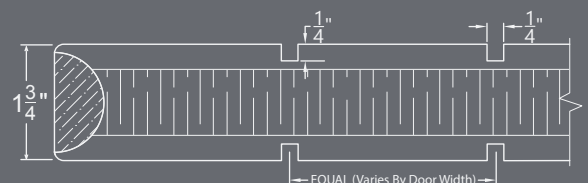
1/2" STAINLESS INLAY



SQUARE GROOVE



1/2" STAINLESS INLAY



SQUARE GROOVE





DC

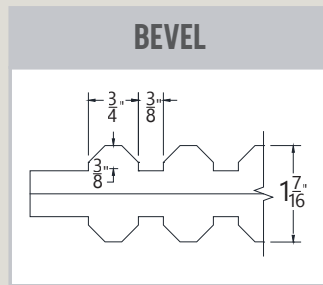
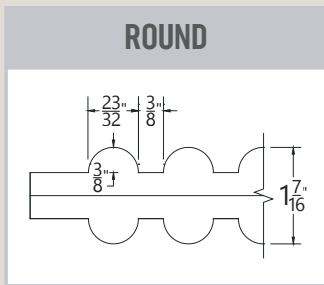
# Custom Flush Doors

Architectural Concepts / Door Collection

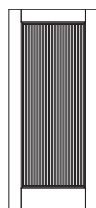
F100	F101	F200	F201	F202	F300	F301	F302	F303	
F304	F305	F306	F307	F308	F400	F401	F402	F403	
F404	F405	F406	F407	F408	F409	F500	F501	F502	
F503	F504	F505	F506	F507	F508	F509	F600	F601	
F602	F603	F604	F605	F606	F607	F608	F900	F901	F902

# Tambour Doors

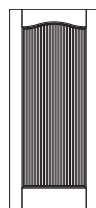
The AC/DC Tambour Door blends classic stile and rail construction with advanced CNC routing—available in round or bevel styles—to create a sleek, modern aesthetic suited for today's contemporary spaces.



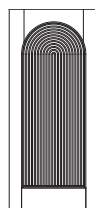
## Tambour Doors



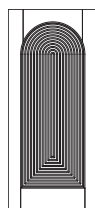
T100



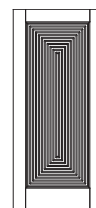
T101



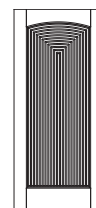
T103



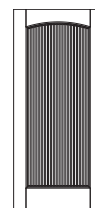
T104



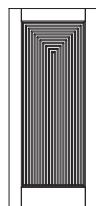
T105



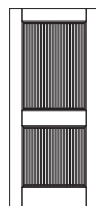
T107



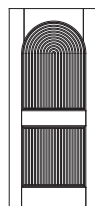
T108



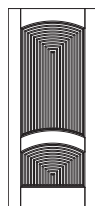
T109



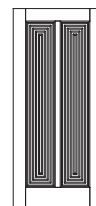
T200



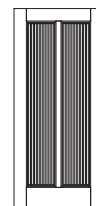
T201



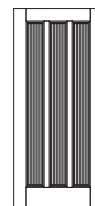
T203



T205



T208



T300



# Fire-Rated Doors



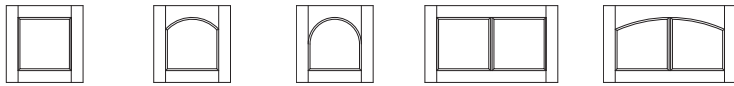
You can focus on a proper fire protection system and your design vision when selecting one of our fire-rated doors. Each door, available in fire ratings of 20-, 45-, 60- and 90-minutes, is carefully designed to match any of our non-rated doors, providing you architectural consistency and peace of mind.



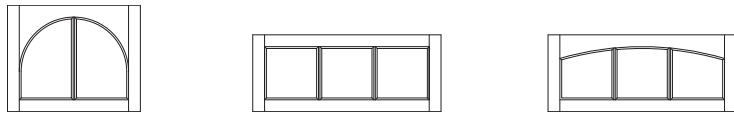
	20-minute MDF	20-minute Wood	45- and 60-minute MDF	90-minute MDF
Category	Category A Category B Neutral Pressure	Category A Category B Neutral Pressure	Category A	Category A
Thickness	1-3/4" minimum	1-3/4" minimum	1-3/4" minimum	1-3/4" minimum
Maximum Width Single	4'0"	4'0"	4'0"	4'0"
Maximum Width Pair	8'0"	8'0"	7'0"	6'0"
Maximum Height	8'0"	8'0"	8'0"	8'0"
Fire Glass Max. Area	2,656 sq. inches	2,656 sq. inches	1,248 sq. inches (45 min.) 100 sq. in. - Matching sticking (60 min.) 1,296 sq. in. with vision kit	100 sq. in. - matching sticking 1,080 sq. in. with vision kit
Standards	ASTM E-152, NFPA 80, NFPA 252 (2017), UL10B, UL10C, CAN/ULC S104 (2015)			

# Transoms

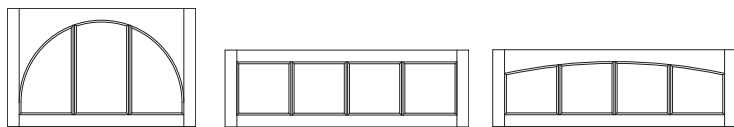
Compliment your doors with MDF transom windows fitted with our clear laminated glass that can make doors and windows feel larger and brighten a room with added light.



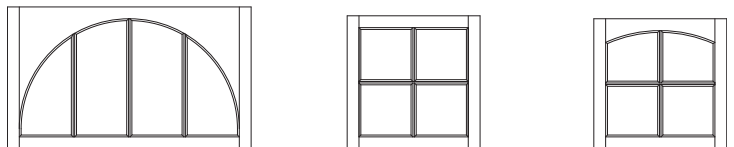
TRG100 TRG110 TRG110 TRG200 TRG201



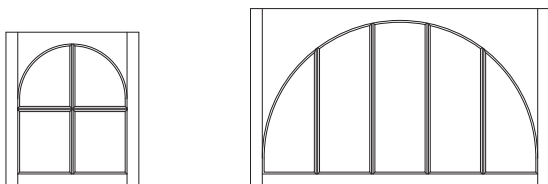
TRG203 TRG300 TRG301



TRG303 TRG400 TRG401



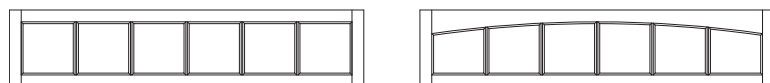
V404 TRG450 TRG451



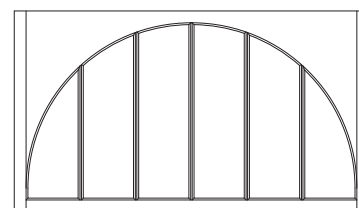
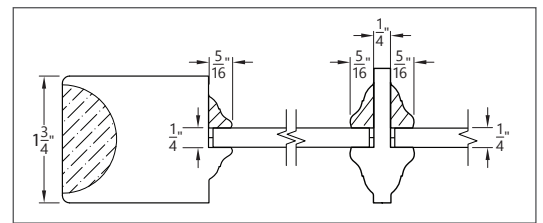
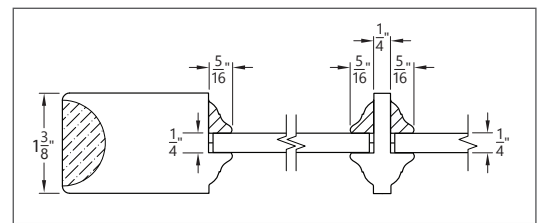
TRG453 TRG503



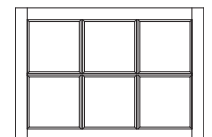
TRG500 TRG501



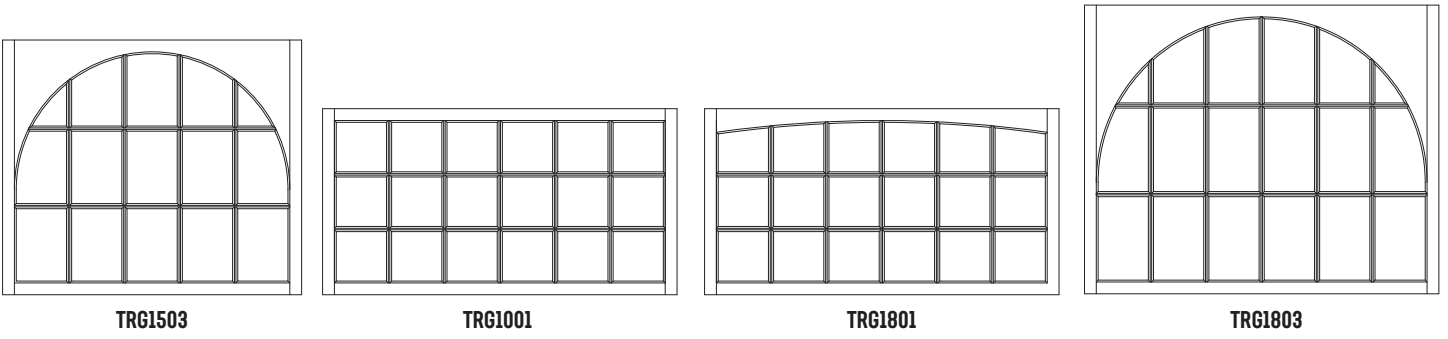
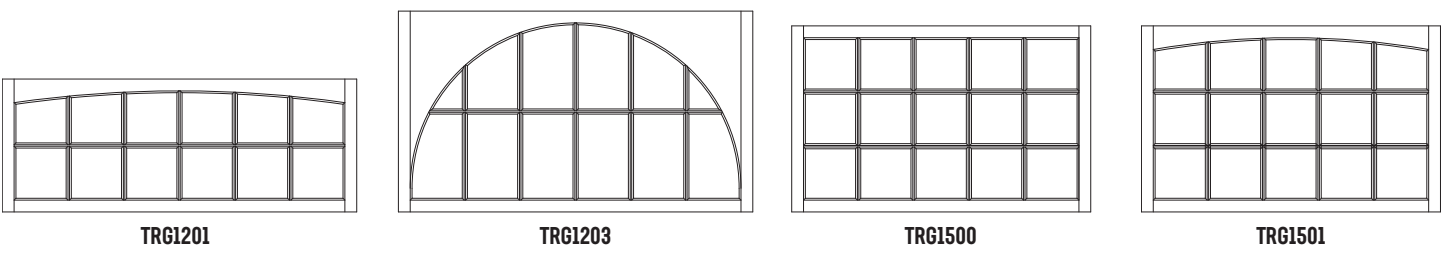
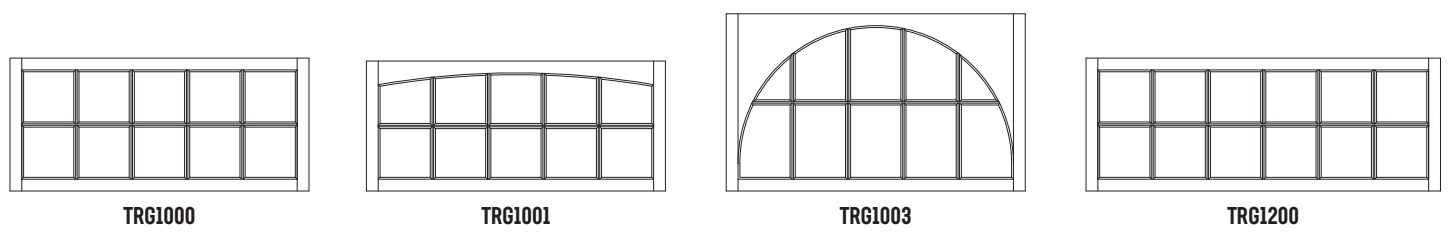
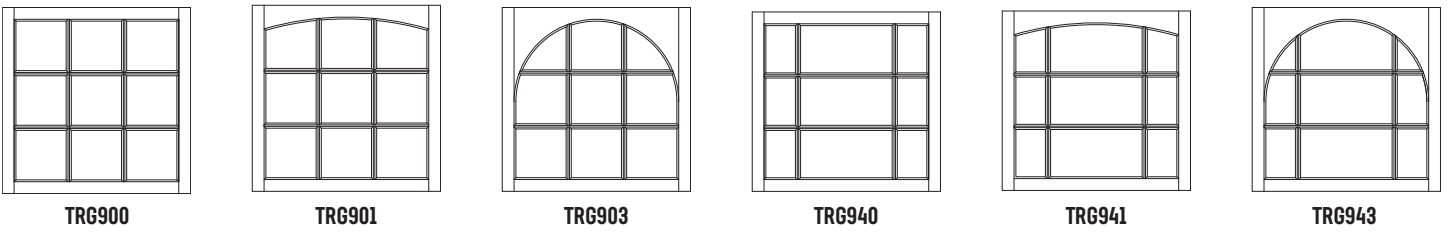
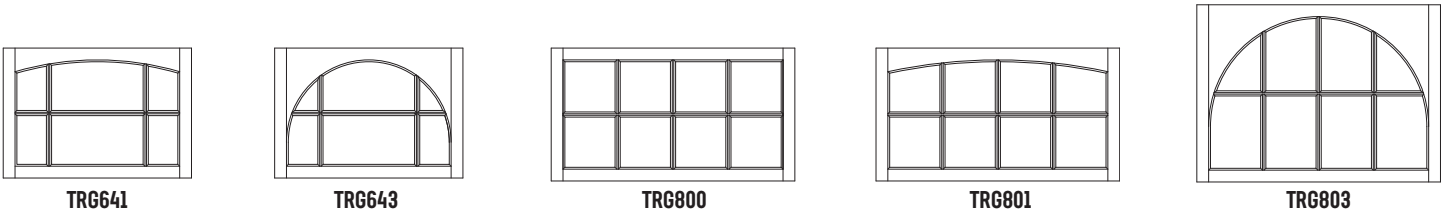
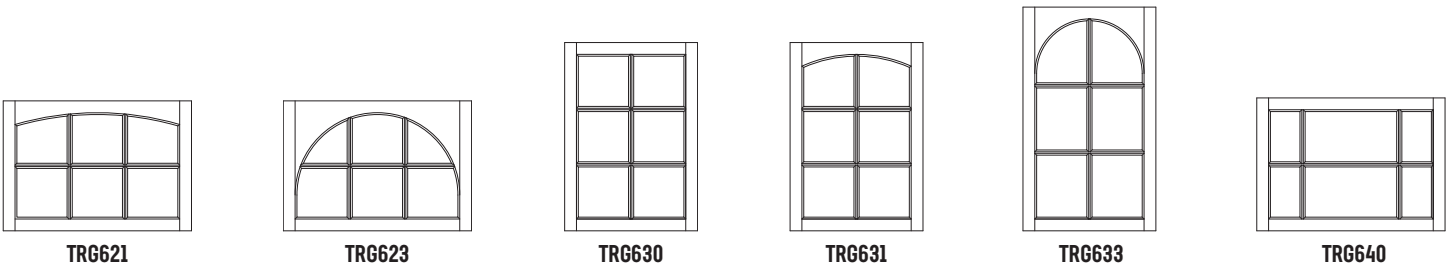
TRG600 TRG601



TRG603



TRG606



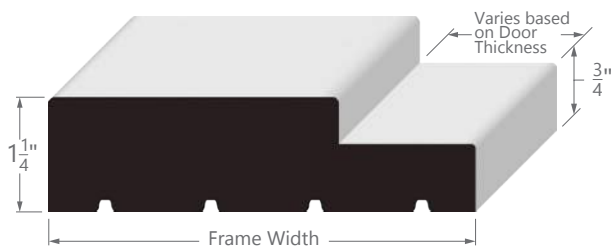


# Wood Frames and Jambs

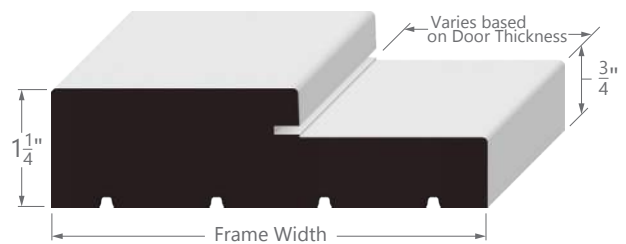
We offer primed poplar flat jambs with applied stop and single rabbeted frames all machined to your hardware specifications and shipped KD (knock down).



**Single Rabbeted Frame**



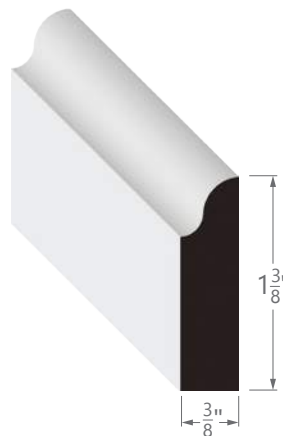
**Single Rabbeted Frame with Kerf**



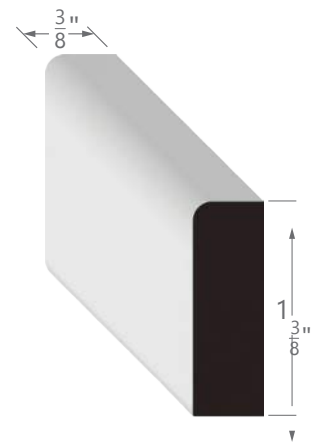
**Flat Interior Jamb**



**OG Door Stop**



**1 RE Door Stop**



# AC STC Ratings

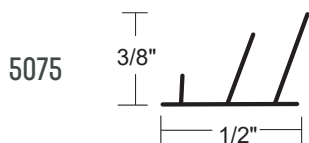
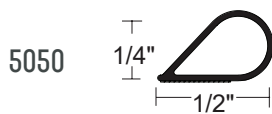
Sound Transmission Class (STC) Rating for Doors determines how successful it will be at blocking the movement of sound. Architectural Concepts MDF Doors are initially a good sound reducer, however, the door is just one piece of the equation. It is important to use the proper acoustical gasketing combinations to seal the gaps around the perimeter of the door opening. The gasketing combinations we list below, when tested with our doors, achieved a zero drop-off in our STC rating. *Ultimately, the hardware gasketing and perimeter sealing determine the sound rating that a door achieves.*

Our MDF Doors have been tested with hardware packages from National Guard Products in the following chart. All of these ratings are for operable single swing doors with the sound control hardware specified on the right-hand side of the table.

## STC Ratings

Door Styles	STC Rating	Door Thickness	National Guard Products (NGP) Hardware Used:		
			Primary Seal	Threshold Saddle	Door Bottom
A100 - A200 Square Sticking (SS) Flat panel (F)	32	1-3/4"	5050 Twin Row	8144 (optional)	12T6
A100 - A200 Square Sticking (SS) Raised panel (R)	34			-or-	-or-
A300 - A900 Square Sticking (SS) Flat panel (F)	33		5075	896S-ADJ	225S x STC2
A300 - A900 Square Sticking (SS) Raised panel (R)	35				

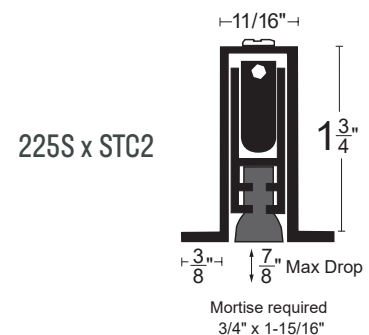
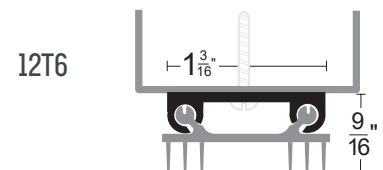
### NGP Primary Seals



### NGP Threshold Saddle



### NGP Door Bottom



Acoustical testing to ASTM E90 Standard Test Method for Measurement of Airborne Sound Transmission Loss of Building Partitions and Elements, ASTM E2235 Standard Test Method for Determination of Decay Rates for use in Sound Insulation Test Methods, and ASTM E1332 Standard Classification for Rating Outdoor - Indoor Sound Attenuation. The sound transmission class (STC) was calculated in accordance with ASTM E413 Classification for Rating Sound Insulation.

# Hardware

We stock a wide variety of barn door track and hardware sets, along with pulls. We can ship them with your doors.

AC4251



ACM06312



AC5310



AC5324



AC5336



AC4251 Flush Pull  
Matte Black

## Pulls Come in Several Finishes

- Polished Stainless
- Satin Stainless
- Bronze Powder coat
- Black Powder coat

## AC Hinges come in Several Finishes

- Polished Chrome
- Satin Chrome
- Satin Nickel
- Oil Rubbed Bronze

## AC .134 Ball Bearing Hinges in Stock

- 3-1/2" x 3-1/2" SQ Corner
- 4" x 4" SQ Corner
- 4-1/2" x 4-1/2" SQ Corner



AC5310 Pull  
Satin Stainless



# Barn Door Hardware



G100  
Square Sticking (SS)  
1/4" White Lami  
ACCL80 Barn Door Track  
LED lighting in Valance

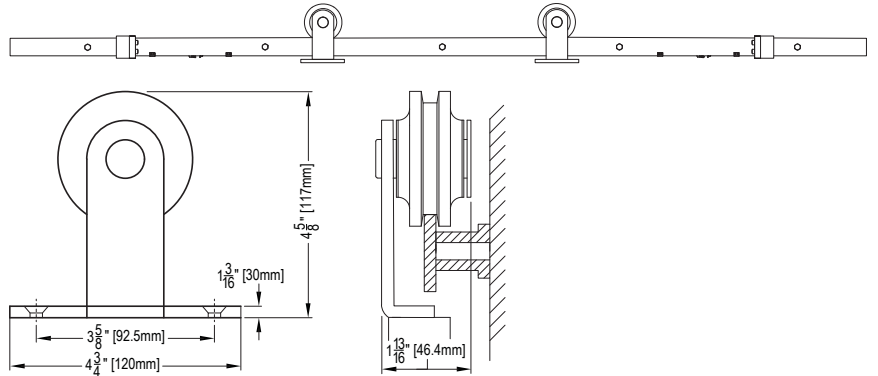


AC8000 Barn Door Track  
Black Powder coat

## AC8000 A

AVAILABLE STOCKED FINISHES

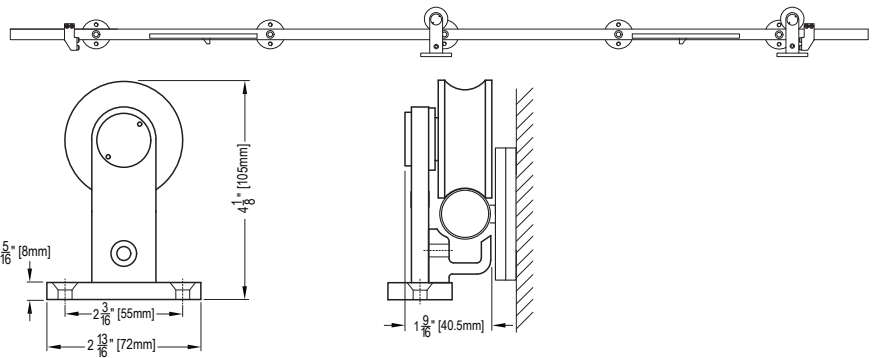
- Matte Black
- Polished Chrome
- Brushed Stainless
- Satin Brass



## AC9000 A

AVAILABLE STOCKED FINISHES

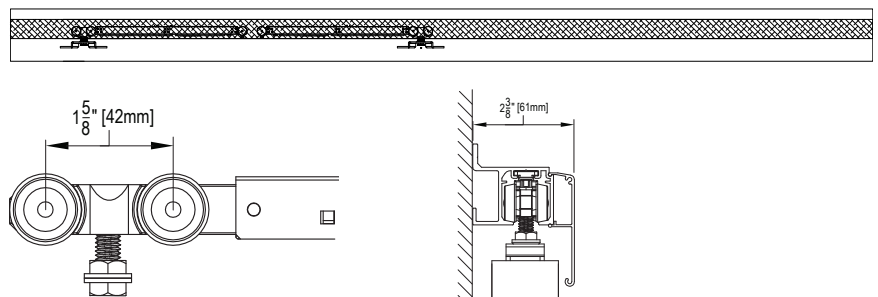
- Matte Black
- Polished Chrome
- Brushed Stainless
- Satin Brass



## ACCL80SC

AVAILABLE STOCKED FINISHES

- Satin Anodized





# Pocket Doors and Frames

Available for 2x4 and 2x6 wall frame kits in standard sizes for single and double pocket doors.

The snap-click frame can be assembled in 15 minutes or less and the reinforced horizontal bars have an inverted swallow-tail shaped profile for improved resistance to pressure and predrilled to make attaching drywall even easier.

G102 Roman Ogee  
1/4" White Lami



Metal Track Holder



Vertical Reinforced Bars



Track Runners



Extractable Track System



Horizontal Reinforced Bars



Door Guide

Stocked at our Denver warehouse ready to ship with your doors





**WE  
BUILD  
HAPPY  
DOORS**



Architectural Concepts / Door Collection

A North Atlantic Company

9400 40th Ave.  
Denver, CO 80238

(888) 248-2724

[archconceptsllc.com](http://archconceptsllc.com)



MARCH 2025